

ESDEC

INNOVATIVE MOUNTING SYSTEMS

**RELIABLE AND
QUICK
INSTALLATION ON
CORRUGATED ROOFS**

CLICKFIT

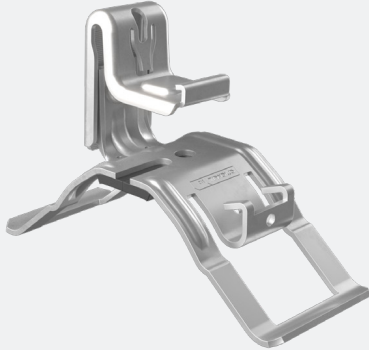
EVO

CORRUGATED ROOF



www.esdec.com

THE BASIC COMPONENTS OF CLICKFIT EVO



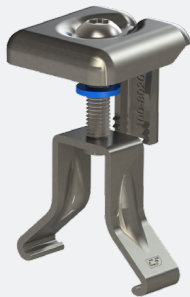
1. CORRUGATED SHEET MOUNTING BRACKET

- One mounting bracket
- Easy installation from above
- Stepless-adjustable height
- Homogeneous force distribution
- Self-aligning click connection: easier and quicker
- Mounting rail can only be placed vertically
- Integrated cable management
- Applicable to both new and existing roof constructions
- For solar panels in landscape orientation
- This mounting bracket supports corrugated sheets of the 177/51 type that meet the valid standards as stipulated in NEN EN 49



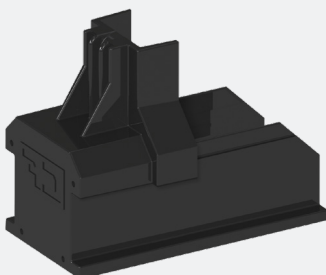
2. MOUNTING RAIL

- 30% more durable
- 30% lighter
- Suitable for larger roof spans



3. UNIVERSAL MODULE CLAMP

- Universal module clamp: suitable for every framed solar panel
- Can be used as a mid clamp and end clamp in combination with the end cap
- Standard assembly
- Includes solar panel levelling system
- Available in grey and black



4. END CAP

- The end cap supports the module clamp
- For an aesthetic finish
- Available in grey and black

CORRUGATED ROOF



EASE OF INSTALLATION ON THE ROOF

ClickFit EVO for corrugated roofs: easy & quick

ClickFit EVO for corrugated roofs was specifically designed for the application of the well-known ClickFit EVO system on corrugated roofs, as frequently found in the agriculture sector, for example. The system is thought through and consists of only 4 components. The mounting system can be applied to both existing roofs and newly-constructed roofs. Thanks to its unique characteristics, the system can be mounted very quickly and easily.

Reliable

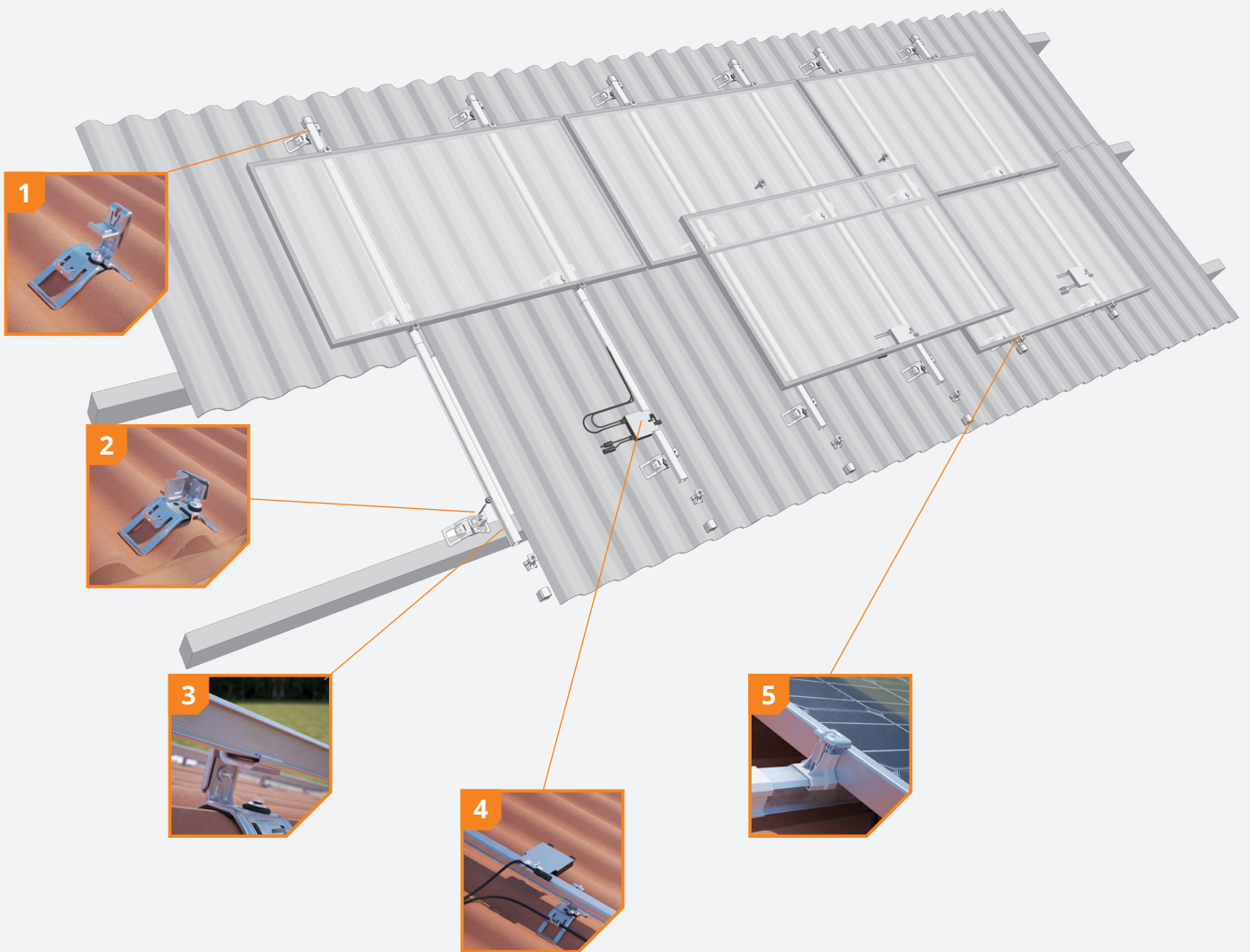
The ClickFit EVO mounting bracket ensures the roof remains 100% waterproof after mounting. The mounting bracket is attached to the roof screws in the purlin. It fits exactly the crest of the roof and is supported by the troughs. This results in a homogeneous distribution of force and minimum load, which both contribute to the robustness of the system. ClickFit EVO for corrugated roofs was extensively tested and comes with a 20-year warranty. This way, the quality of the system and the required reliability are guaranteed.

THE BENEFITS FOR THE INSTALLER

- ✓ 4 components
- ✓ 1 tool
- ✓ Easy installation on new & existing roofs
- ✓ Safe and reliable
- ✓ 20-year product warranty

THE BENEFITS FOR YOUR CUSTOMER

- ✓ Rock-solid base for solar panels
- ✓ 100% waterproof
- ✓ Safe and reliable
- ✓ 20-year product warranty
- ✓ The roof stays intact



1 Mounting bracket

The height of the mounting bracket is steplessly adjustable.

2 Attachment using existing corrugated sheet screws

The mounting bracket is equipped with a notch, allowing for easy attachment of the mounting bracket to the corrugated sheet screws.

3 Unique click connection

The mounting bracket is equipped with a self-aligning click connection. This way, the mounting rail can always be mounted easily from above.

4 Integrated cable management

Cables and plugs can always be neatly and safely located in both the mounting bracket and the cable clip. Power optimisers can also easily be clicked onto the cable clip.

5 The right dimensions at all times

The universal module clamp is suitable for all framed solar panels and can be used as a mid clamp and as an end clamp if combined with the end cap or end clamp support.

ROOF CONNECTOR



ClickFit EVO – Corrugated Sheet Mounting Bracket
1008090

MOUNTING RAIL



ClickFit EVO Mounting Rail

Mounting Rail 1106mm	1008121
Mounting Rail 2174mm	1008122
Mounting Rail 3242mm	1008123
Mounting Rail 3500mm	1008007
Mounting Rail 4310mm	1008124
Mounting Rail 5378mm	1008125
Mounting Rail 6446mm	1008126

MODULE CLAMP & END CONNECTORS



ClickFit EVO – Module Clamp Universal grey
1008020



ClickFit EVO – Module Clamp Universal black
1008020-B



ClickFit EVO – Mounting Rail End Cap grey
1008060



ClickFit EVO – Mounting Rail End Cap black
1008060-B



ClickFit EVO – End Cap without end clamp support grey
1008066



ClickFit EVO – End Cap without end clamp support black
1008066-B



ClickFit EVO – End Clamp Support grey
1008065



ClickFit EVO – End Clamp Support black
1008065-B

MOUNTING MATERIALS



Self-drilling screw 5.5x48mm T30
1008095

ACCESSORIES



ClickFit EVO – Mounting Rail Connector Piece
1008061



ClickFit EVO – Mounting Rail Cable clip optimiser ready
1008062

Calculator

In the Esdec calculator you can manage and calculate all your projects, for both pitched and flat roofs. One platform with all Esdec mounting systems for the most reliable calculation of your project.

- Save time: manage all your projects on one platform
- One calculator for projects on pitched and flat roofs
- All calculations are based on extensive testing and the latest safety standards

Go to eu.esdec.com/en/calculator



Warranty

ClickFit EVO meets all applicable standards and requirements. ClickFit EVO comes with a unique warranty of up to 20 years to guarantee the quality of the system.

- High-grade and high-tech materials
- Extensively tested
- Warranty of up to 20 years





QUICK
RELIABLE
INNOVATIVE

**MAKE THE CONNECTION
WITH ESDEC**

Esdec has developed, produced and supplied professional mounting systems for solar panels on roofs since 2004. ClickFit and FlatFix are inspired by installers who regularly place solar panels. Easy, quick and reliable installation with innovative, high-grade and sustainable mounting systems; that is what Esdec offers.

Esdec

Londenstraat 16
7418 EE Deventer
The Netherlands

☎ +31 850 702 000
✉ info@esdec.com

www.esdec.com