

PRODUCT CATALOGUE

Q2.2023.EN

We are ready for the future...
Are you?

voltalia

THE COMPANY



Founded in 2005, Voltalia is an international player in renewable energy generation and storage, acting both as Power Producer and Service Provider for its Clients.

With a historic purpose to "Improve global environment, fostering local development", Voltalia has officially become a "Mission-Driven" company in 2021 to enhance its environmental and social commitments.

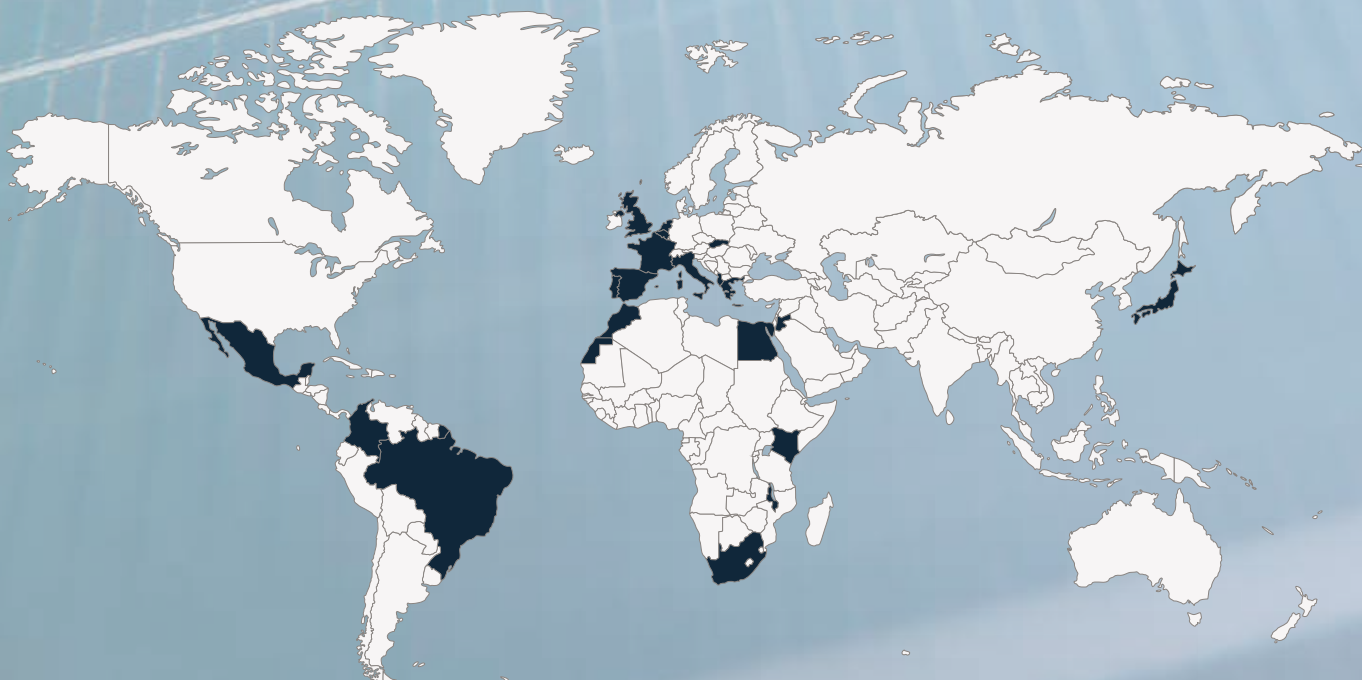
It also provides services to independent customers. Voltalia operates in 20 countries over 3 continents and is able to act worldwide on behalf of its customers.

Acting as a Distributor on a global scale, since 2008, enabled us to supply more than 1 GW of solar PV technology, making sure that distribution is always accompanied by knowledge and services that add value for/to our customers, in the Residential, Commercial and Industrial sector.

The distribution business line of Voltalia is specialized in the distribution of Solar Equipment: modules, inverters, mounting systems, batteries, self-consumption kits and all type of PV accessories and components.

On the distribution, our aim is to provide added value solutions to meet our clients' requirements and contribute to the expansion of their business, building a real partnership with them.

OUR PRESENCE



YOUR PV PARTNER

We are more than a sustainable solutions partner/provider, we also aim to contribute to expand your business, building a strong partnership that will benefit both parties.

- Our team is devoted in finding the best solutions and products to fulfill your PV requirements;
- Our more than 12 years PV expertise and know how guarantee the quality and reliability of the products and solutions we distribute;
- We are flexible, and we supply customized solutions.

WE FOCUS NOT ONLY ON THE PRODUCT, BUT ALSO ON THE SERVICE:

- Personalized Commercial Attention / Local dedicated Sales Force;
- Technical support / Training workshops;
- Logistics and Warehousing: Flexible Logistics provided by large and reliable International and local logistics network;
- After Sales Service;
- Team with local presence;
- We speak your language.

We are ready for the future. Flexibility, excellence in service and continuous technological innovation are our guidelines, conceived to provide installers worldwide with the best offer for all kinds of PV installations.

"When you choose Voltalia as Distributor, you choose a reliable companion that will always be available for you during the whole process to back up the success of your projects"

OUR COMMITMENT

Voltalia Distribution business line commitment is much more than towards quality and service; we are also highly involved in the environmental protection and in the research and development of new photovoltaic solutions to build together with our clients and partners a safer and greener future.

INDEX

06. Modules

- 07. JA Solar
- 11. Risen

19. Inverters

- 20. Huawei
- 26. Goodwe
- 37. Growatt
- 39. Solax
- 42. Hoymiles

48. Batteries

- 49. Huawei
- 51. Goodwe
- 54. Energizer

59. E-Mobility

- 60. Huawei
- 62. Growatt
- 64. Goodwe

67. Off-Grid

- 68. Victron Energy

74. Mounting Systems

- 75. Esdec
- 83. K2 systems
- 96. Van der Valk Systems

*all the warranties presented in this catalog are merely indicative and does not exempt you from consulting the manufacturers' warranty certificates.

105. Monitoring Systems

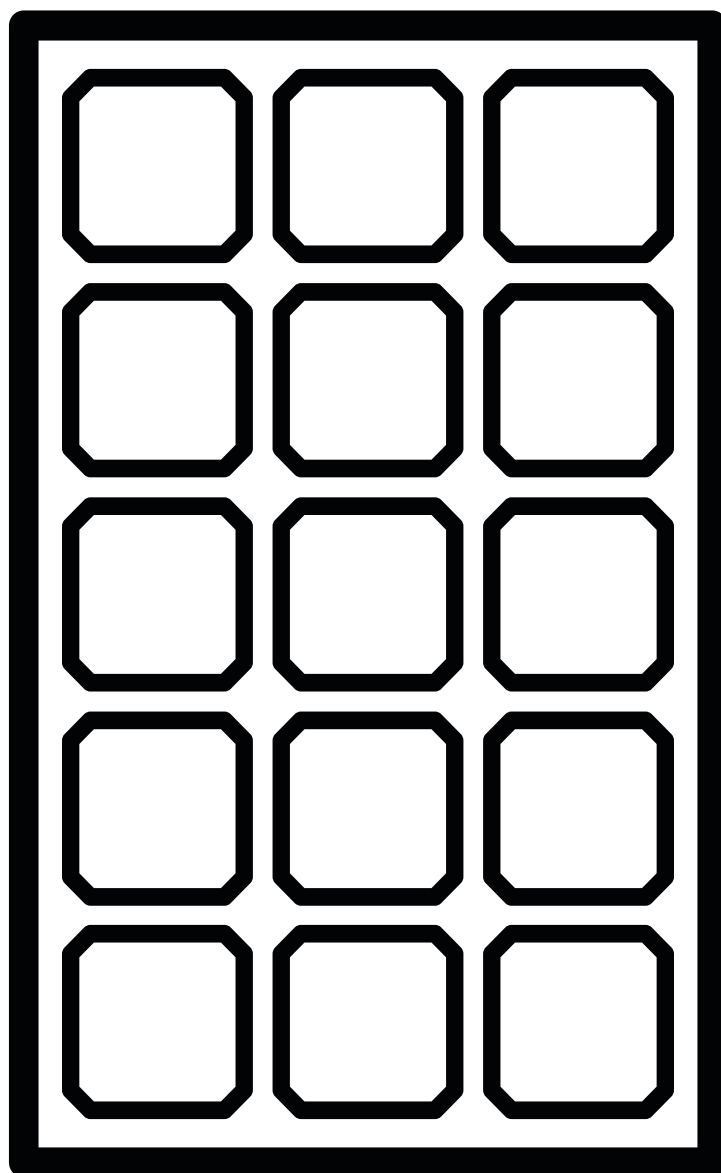
- 106. Huawei
- 106. Hoymiles
- 107. Goodwe
- 108. Ingenieurburo
- 109. Growatt

114. Equipment & Accessories

- 115. Enco
- 115. Top Cable
- 116. Weidmuller
- 116. Staubli

118. DIY Kits

- 119. EnergyKit



Solar Modules

Company

Founded in 2005, JA Solar is a manufacturer of high-performance photovoltaic products. With 12 manufacturing bases and more than 20 branches around the world, the company's business covers silicon wafers, cells, modules and photovoltaic power stations. JA Solar products are available in over 120 countries and regions and are used extensively in ground-mounted power plants, commercial & industrial rooftop PV systems and residential rooftop PV systems. With its advantages of continuous technological innovation, sound financial performance, and well-established global sales and service networks, JA Solar has been well received and highly recognized by clients from home and abroad. The company has been listed on Fortune China 500 and Global Top 500 New Energy Enterprises for several consecutive years.

Annual Sales Revenue (2019): ¥21.2 billion

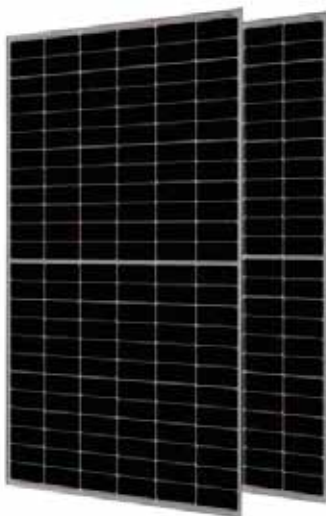
Cumulative Shipments (As of Q4, 2019): 45GW

Clients Worldwide (As of Q4, 2019): 33000

Employees (As of Q4, 2019): 22000



390W MBB Half-Cell Module



365-390/MR

JAM60S20



[+ info](#)

Model	JAM60S20 -365/MR	JAM60S20 -370/MR	JAM60S20 -375/MR	JAM60S20 -380/MR	JAM60S20 -385/MR	JAM60S20 -390/MR
Maximum Efficiency	19.6%	19.9%	20.2%	20.4%	20.7%	21.0%
Weight / Dimensions	18.8kg / 1769 x 1052 x 35 mm					
Tolerance	0~+5W					
Pmax Temperature Coefficient	-0.350%/°C					
Cells	Perc Monocrystalline					
Mechanical Load	5400 Pa (front) / 2400 Pa (back)					
Product Warranty	12-year product warranty 25-year linear power output warranty					

*some models can be supplied with black frame/all black

415W MBB Half-Cell Module



390-415/MR

JAM54S30



[+ info](#)

Model	JAM54S30 -390/MR	JAM54S30 -395/MR	JAM54S30 -400/MR	JAM54S30 -405/MR	JAM54S30 -410/MR	JAM54S30 -415/MR
Maximum Efficiency	20.0%	20.2%	20.5%	20.7%	21.0%	21.3%
Weight / Dimensions	21.5kg / 1722 x 1134 x 30 mm					
Tolerance	0~+5W					
Pmax Temperature Coefficient	-0.350%/°C					
Cells	Perc Monocrystalline					
Mechanical Load	5400 Pa (front) / 2400 Pa (back)					
Product Warranty	12-year product warranty 25-year linear power output warranty					

*some models can be supplied with black frame/all black

470W MBB Half-Cell Module



445-470/MR

JAM72S20



[+ info](#)

Model	JAM72S20 -445/MR	JAM72S20 -450/MR	JAM72S20 -455/MR	JAM72S20 -460/MR	JAM72S20 -465/MR	JAM72S20 -470/MR
Maximum Efficiency	20.0%	20.3%	20.5%	20.7%	20.9%	21.2%
Weight / Dimensions	22.8kg / 2112 x 1052 x 35 mm					
Tolerance	0~+5W					
Pmax Temperature Coefficient	-0.350%/°C					
Cells	Perc Monocrystalline					
Mechanical Load	5400 Pa (front) / 2400 Pa (back)					
Product Warranty	12-year product warranty 25-year linear power output warranty					

*some models can be supplied with black frame/all black

505W MBB Bifacial Mono PERC



480-505/MB

JAM66D30



[+ info](#)

Model	JAM66D30 -480/MB	JAM66D30 -485/MB	JAM66D30 -490/MB	JAM66D30 -495/MB	JAM66D30 -500/MB	JAM66D30 -505/MB
Maximum Efficiency	20.2%	20.4%	20.6%	20.8%	21.0%	21.2%
Weight / Dimensions	29.0kg / 2100 x 1134 x 35 mm					
Tolerance	0~+5W					
Pmax Temperature Coefficient	-0.350%/°C					
Cells	Percium Cells					
Mechanical Load	5400 Pa (front) / 2400 Pa (back)					
Product Warranty	12-year product warranty 30-year linear power output warranty					

*some models can be supplied with black frame/all black

505W MBB Half-Cell Module



480-505/MR

JAM66S30



[+ info](#)

Model	JAM66S30 -480/MB	JAM66S30 -485/MB	JAM66S30 -490/MB	JAM66S30 -495/MB	JAM66S30 -500/MB	JAM66S30 -505/MB
Maximum Efficiency	20.2%	20.4%	20.6%	20.8%	21.1%	21.3%
Weight / Dimensions	26.3kg / 2094 x 1134 x 35 mm					
Tolerance	0~+5W					
Pmax Temperature Coefficient	-0.350%/°C					
Cells	Perc Monocrystalline					
Mechanical Load	5400 Pa (front) / 2400 Pa (back)					
Product Warranty	12-year product warranty 25-year linear power output warranty					

*some models can be supplied with black frame/all black

550W MBB Half-Cell Module



525-550/MR

JAM72S30



[+ info](#)

Model	JAM72S30 -525/MR	JAM72S30 -530/MR	JAM72S30 -535/MR	JAM72S30 -540/MR	JAM72S30 -545/MR	JAM72S30 -550/MR
Maximum Efficiency	20.3%	20.5%	20.7%	20.9%	21.1%	21.3%
Weight / Dimensions	28.6kg / 2279 x 1134 x 35 mm					
Tolerance	0~+5W					
Pmax Temperature Coefficient	-0.350%/°C					
Cells	Perc Monocrystalline					
Mechanical Load	5400 Pa (front) / 2400 Pa (back)					
Product Warranty	12-year product warranty 25-year linear power output warranty					

*some models can be supplied with black frame/all black

550W MBB Bifacial Mono PERC



525-550/MB

JAM72D30

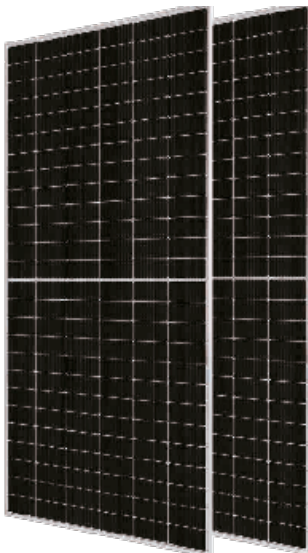


[+ info](#)

Model	JAM72D30 -525/MB	JAM72D30 -530/MB	JAM72D30 -535/MB	JAM72D30 -540/MB	JAM72D30 -545/MB	JAM72D30 -550/MB
Maximum Efficiency	20.3%	20.5%	20.6%	20.8%	21.0%	21.2%
Weight / Dimensions	31.6kg / 2285 x 1134 x 35 mm					
Tolerance	0~+5W					
Pmax Temperature Coefficient	-0.350%/°C					
Cells	Percium Cells					
Mechanical Load	5400 Pa (front) / 2400 Pa (back)					
Product Warranty	12-year product warranty 30-year linear power output warranty					

*some models can be supplied with black frame/all black

605W MBB Half-cell module



580-605/MR

JAM78S30



[+ info](#)

Model	JAM78S30 -580/MR	JAM78S30 -585/MR	JAM78S30 -590/MR	JAM78S30 -595/MR	JAM78S30 -600/MR	JAM78S30 -605/MR
Maximum Efficiency	20.7%	20.9%	21.1%	21.3%	21.5%	21.6%
Weight / Dimensions	31.1kg / 2467 x 1136 x 36 mm					
Tolerance	0~+5W					
Pmax Temperature Coefficient	-0.350%/°C					
Cells	Mono					
Mechanical Load	5400 Pa (112lb/ft²) / 2400 Pa (50lb/ft²)					
Product Warranty	12-year product warranty 30-year linear power output warranty					

*some models can be supplied with black frame/all black



JASolar Warranty

[+ info](#)



[+ video](#)

RISEN ENERGY CO., LTD

Risen Energy Co., Ltd. was founded in 1986 and listed as a Chinese public company (Stock Code: 300118) in 2010. Risen Energy is one of the pioneers in solar industry and has committed to this industry as a R&D expert, an integrated manufacturer from wafers to modules, a manufacturer of off-grid systems, and also an investor, a developer and an EPC of PV projects. Aiming to deliver the green energy worldwide, Risen Energy is developing internationally with offices and sales networks in China, Germany, Australia, Mexico, India, Japan, USA and others.

Exported to the world

As a state-level high-tech enterprise, Risen Energy has more than 45 key business core technologies, and has established a national level photovoltaic laboratory, which is independent and received CNAS certification. The laboratory can carry out 54 project tests according to EC61215, IEC61730-2 and UL1703, and provide support for the design, development and quality control of the company and other photovoltaic enterprises.



RSM40-8-390M-410M



390M-410M

RSM40-8



[+ info](#)

Model	RSM40-8-390M	RSM40-8-395M	RSM40-8-400M	RSM40-8-405M	RSM40-8-410M
Maximum Efficiency	20.3%	20.5%	20.8%	21.1%	21.3%
Weight / Dimensions	21.0kg / 1754 x 1096 x 30 mm				
P _{max} Temperature Coefficient	-0.34%/°C				
Cells	Perc Monocrystalline				
Mechanical Load	wind load 2400Pa & snow load 5400Pa				
Product Warranty	12-year product warranty 25-year linear power warranty				

*some models can be supplied with black frame/all black

RSM144-7-435M-455M



435M-455M

RSM144-7



[+ info](#)

Model	RSM144-7-435M	RSM144-7-440M	RSM144-7-445M	RSM144-7-450M	RSM144-7-455M
Maximum Efficiency	19.7%	19.9%	20.1%	20.4%	20.6%
Weight / Dimensions	24.5kg / 2108 x 1048 x 35 mm				
P _{max} Temperature Coefficient	-0.37%/°C				
Cells	Perc Monocrystalline				
Mechanical Load	2400Pa & snow load 5400Pa resistance				
Product Warranty	12-year product warranty 25-year linear power warranty				

*some models can be supplied with black frame/all black

RSM130-8-430-450M



430M-450M

RSM130-8



[+ info](#)

Model	RSM130-8-430M	RSM130-8-435M	RSM130-8-440M	RSM130-8-445M	RSM130-8-450M
Maximum Efficiency	20.7%	21.0%	21.2%	21.4%	21.7%
Weight / Dimensions	22.5kg / 1894 x 1096 x 30 mm				
Tolerance	0~+3%				
Pmax Temperature Coefficient	-0.34%/°C				
Cells	Perc Monocrystalline				
Mechanical Load	wind load 2400Pa & snow load 5400Pa				
Product Warranty	12-year product warranty 25-year linear power warranty				

*some models can be supplied with black frame/all black

RSM110-8-530-550BMDG



530-550BMDG

RSM110-8

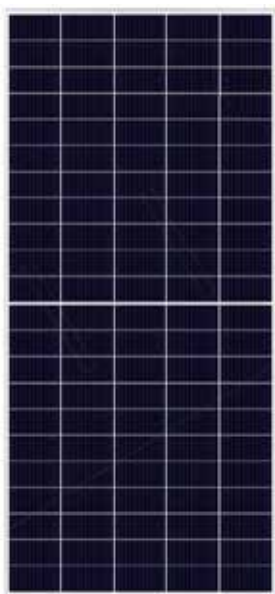


[+ info](#)

Model	RSM110-8-530BMDG	RSM110-8-535BMDG	RSM110-8-540BMDG	RSM110-8-545BMDG	RSM110-8-550BMDG
Maximum Efficiency	20.3%	20.5%	20.7%	20.9%	21.0%
Weight / Dimensions	33±0.5kg / 2384×1096×30mm				
Tolerance	0~+3%				
Pmax Temperature Coefficient	-0.34%/°C				
Cells	Perc Monocrystalline				
Mechanical Load	wind load 2400Pa & snow load 5400Pa				
Product Warranty	12-year product warranty 25-year linear power warranty				

*some models can be supplied with black frame/all black

RSM110-8-535M-555M



535M-555M

RSM110-8

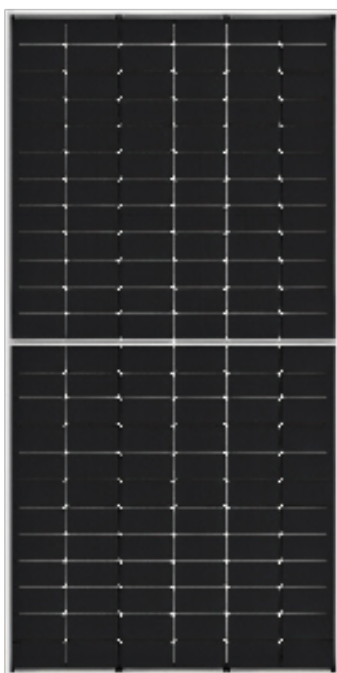


[+ info](#)

Model	RSM110-8-535M	RSM110-8-540M	RSM110-8-545M	RSM110-8-550M	RSM110-8-555M
Maximum Efficiency	20.5%	20.7%	20.9%	21.0%	21.2%
Weight / Dimensions	29.0kg / 2384 x 1096 x 35 mm				
Tolerance	0~+5W				
Pmax Temperature Coefficient	-0.37%/°C				
Cells	Perc Monocrystalline				
Mechanical Load	5400 Pa (front) / 2400 Pa (back)				
Product Warranty	12-year product warranty 25-year linear power warranty				

*some models can be supplied with black frame/all black

RSM144-10-570BNDG-595BNDG



570-595W

RSM144-10

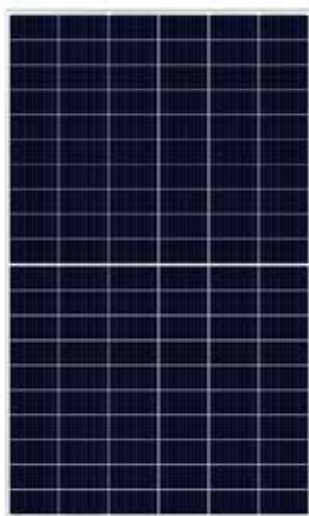


[+ info](#)

Model	RSM144-10-570BNDG	RSM144-10-575BNDG	RSM144-10-580BNDG	RSM144-10-585BNDG	RSM144-10-590BNDG	RSM144-10-595BNDG
Maximum Efficiency	21.1%	21.3%	21.5%	21.6%	21.8%	22.0%
Weight / Dimensions	33.5kg / 2384 x 1134 x 30mm					
Tolerance	0~+3%					
Pmax Temperature Coefficient	-0.32%/°C					
Cells	Perc Monocrystalline					
Mechanical Load	wind load 2400Pa & snow load 5400Pa					
Product Warranty	12-year product warranty 25-year linear power warranty					

*some models can be supplied with black frame/all black

RSM120-8-580M-600M



580M-600M

RSM120-8

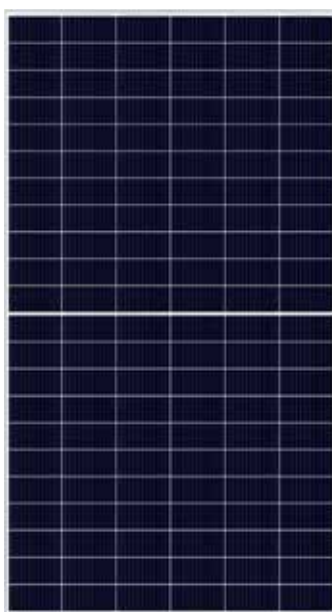


[+ info](#)

Model	RSM120-8-580M	RSM120-8-585M	RSM120-8-590M	RSM120-8-595M	RSM120-8-600M
Maximum Efficiency	20.5%	20.7%	20.8%	21.0%	21.2%
Weight / Dimensions	31.5±0.5kg / 2172 x 1303 x 35 mm				
Pmax Temperature Coefficient	-0.37%/°C				
Cells	Perc Monocrystalline				
Mechanical Load	wind load 2400Pa & snow load 5400Pa				
Product Warranty	12-year product warranty 25-year linear power warranty				

*some models can be supplied with black frame/all black

RSM132-8-640M-660M



640M-660M

RSM132-8

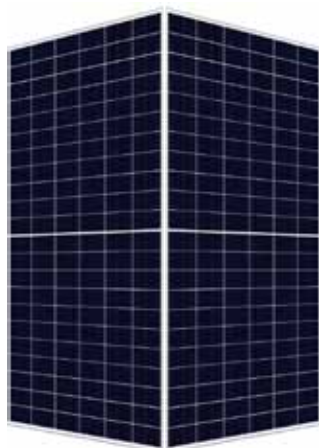


[+ info](#)

Model	RSM132-8-640M	RSM132-8-645M	RSM132-8-650M	RSM132-8-655M	RSM132-8-660M
Maximum Efficiency	20.6%	20.8%	20.9%	21.1%	21.2%
Weight / Dimensions	34.0kg / 2384 x 1303 x 35 mm				
Pmax Temperature Coefficient	-0.34%/°C				
Cells	Perc Monocrystalline				
Mechanical Load	wind load 2400Pa & snow load 5400Pa				
Product Warranty	12-year product warranty 25-year linear power warranty				

*some models can be supplied with black frame/all black

RSM132-8-640BMDG-665BMDG —



640BMDG-665BMDG

RSM132-8



[+ info](#)

Model	RSM132-8-640BMDG	RSM132-8-645BMDG	RSM132-8-650BMDG	RSM132-8-655BMDG	RSM132-8-660BMDG	RSM132-8-665BMDG
Maximum Efficiency	20.6%	20.8%	20.9%	21.1%	21.2%	21.4%
Weight / Dimensions	40.0kg / 2384 x 1303 x 35 mm					
P _{max} Temperature Coefficient	-0.34%/°C					
Cells	Perc Monocrystalline					
Mechanical Load	wind load 2400Pa & snow load 5400Pa					
Product Warranty	12-year product warranty 30-year linear power warranty					

*some models can be supplied with black frame/all black

RSM132-8-645-670M



645-670M

RSM132-8

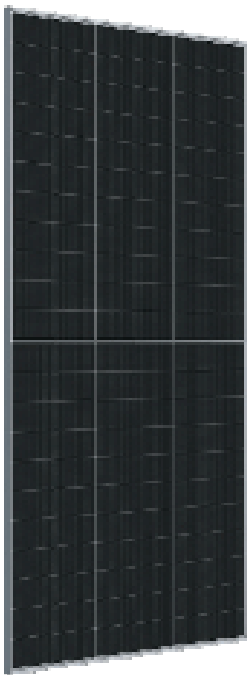


[+ info](#)

Model	RSM132-8-645M	RSM132-8-650M	RSM132-8-655M	RSM132-8-660M	RSM132-8-665M	RSM132-8-670M
Maximum Efficiency	20.8%	20.9%	21.1%	21.2%	21.4%	21.6%
Weight / Dimensions	34.0kg / 2384 x 1303 x 35 mm					
Tolerance	0~+3%					
P _{max} Temperature Coefficient	-0.34%/°C					
Cells	Perc Monocrystalline					
Mechanical Load	wind load 2400Pa & snow load 5400Pa					
Product Warranty	12-year product warranty 25-year linear power warranty					

*some models can be supplied with black frame/all black

RSM132-8-665-690BNDG



665-690W

RSM132-8

Bloomberg
TIER 1

Bifacial

12
years

+

2
EL

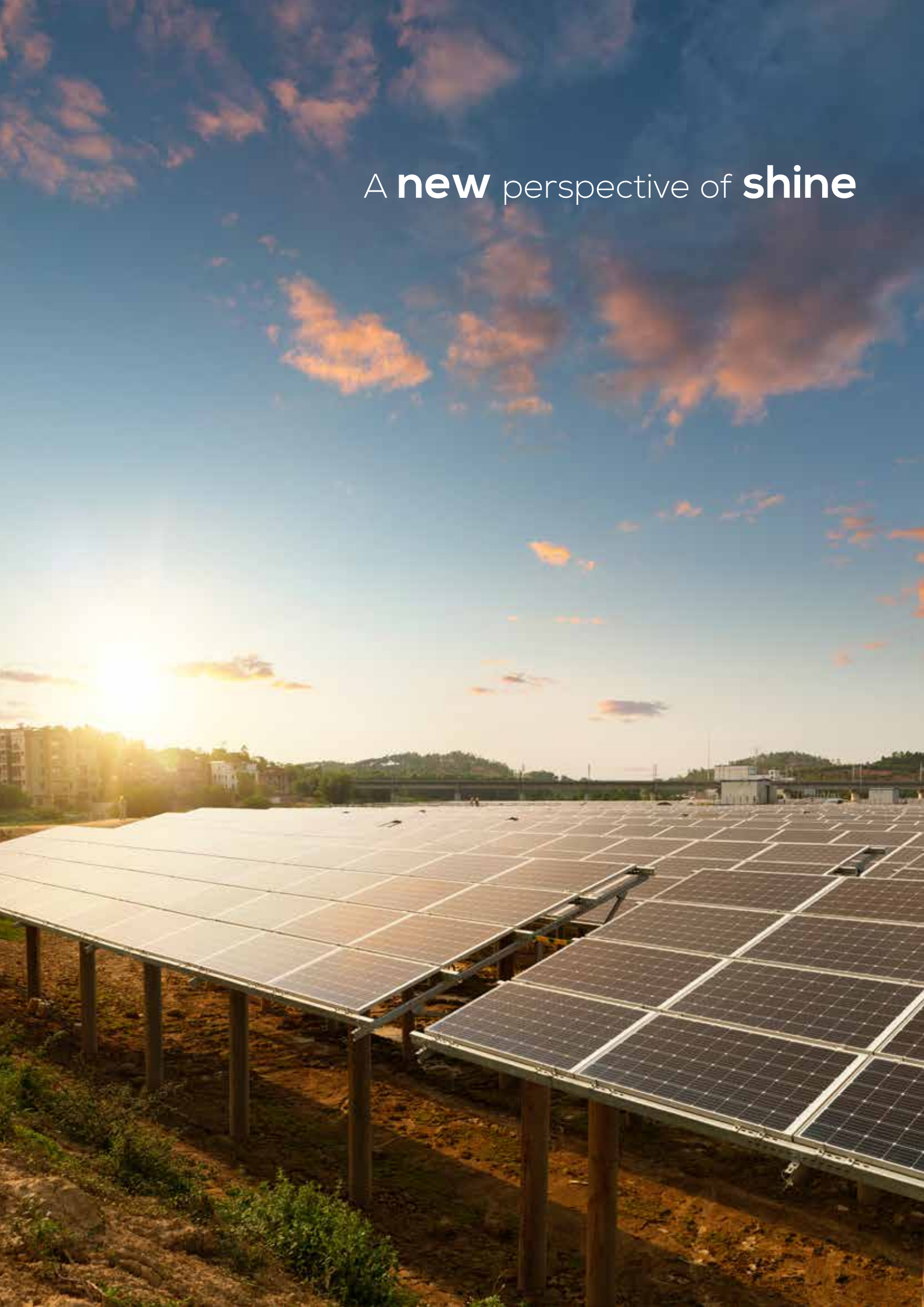
PID

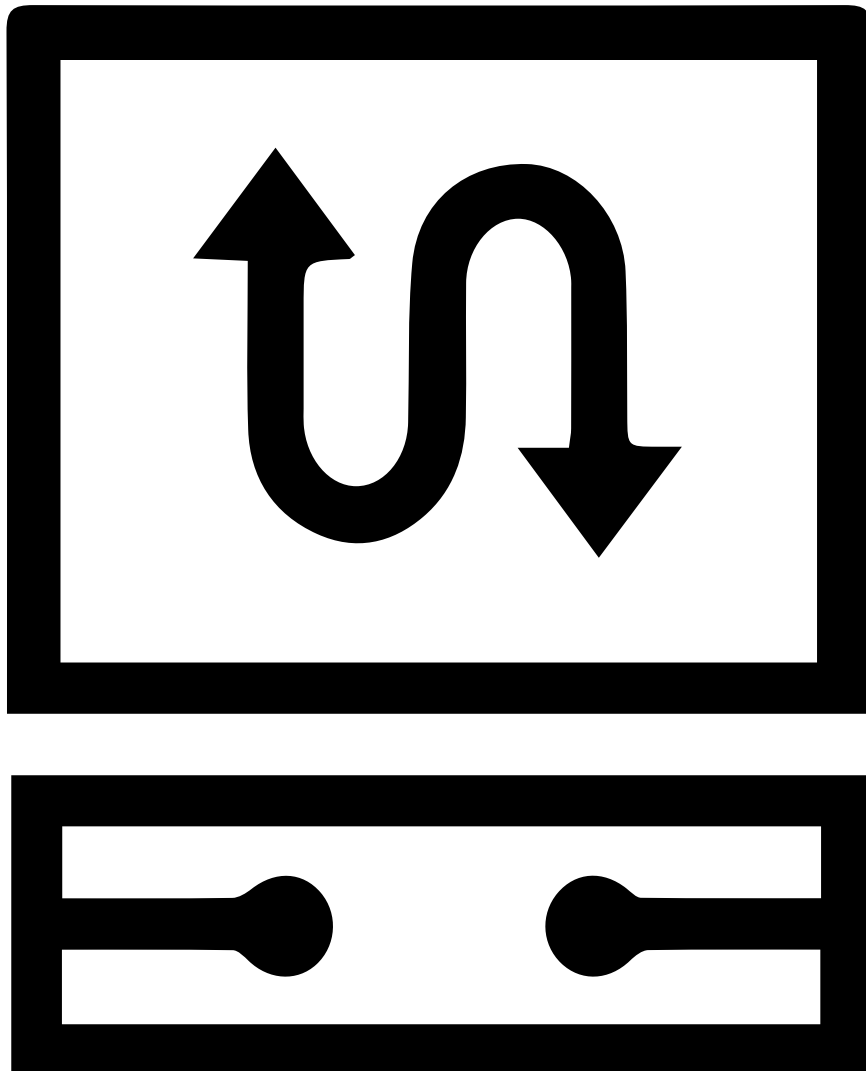
[+ info](#)

Model	RSM132-8-665BNDG	RSM132-8-670BNDG	RSM132-8-675BNDG	RSM132-8-680BNDG	RSM132-8-685BNDG	RSM132-8-690BNDG
Maximum Efficiency	21.4%	21.6%	21.7%	21.9%	22.1%	22.2%
Weight / Dimensions	38.5kg / 2384×1303×35mm					
Tolerance	0~+3%					
Pmax Temperature Coefficient	-0.32%/°C					
Cells	Perc Monocrystalline					
Mechanical Load	wind load 2400Pa & snow load 5400Pa					
Product Warranty	12-year product warranty 30-year linear power warranty					

*some models can be supplied with black frame/all black

A **new** perspective of **shine**





Inverters

Company

Huawei, a leading global ICT and network energy solutions provider, serves more than one-third of the world's population. We have nearly 188,000 employees, and we operate in more than 170 countries and regions, serving more than three billion people around the world. With over CNY480 billion invested into R&D over the past decade, Huawei continues to innovate based on customer needs and are committed to enhancing customer experience and delivering maximum value.

FusionSolar

With an established presence in solar markets worldwide, Huawei provides new generation string inverters with smart management technology to create a fully digitalized Smart PV Solution – FusionSolar®. FusionSolar® is smart, safe and reliable whilst consistently delivering high yields and ROI, making Huawei the preferred choice for investors and developers worldwide. Huawei has been ranked as No.1 in the world for global inverter shipments from 2015 to 2018.



Smart PV Optimizer

SUN2000-450W



One-Fits-All Optimizer
Easier Business



<1.5 min Pairing with Inverter



<5s Module Auto-Mapping



Arc Fault Pinpoint Position

[+ info](#)

Model	SUN2000-450W-P
Rated input power	450 W
Maximum Efficiency	99.5 %
Protection	IP68

Smart PV Optimizer

SUN2000-600W



NEW



One-Fits-All Optimizer
Easier Business



<1.5 min Pairing with Inverter



<5s Module Auto-Mapping



Arc Fault Pinpoint Position

[+ info](#)

Model	SUN2000-600W-P
Rated input power	600 W
Maximum Efficiency	99.5 %
Protection	IP68

Smart Energy Center

SUN2000-2/3/3.68/4/4.6/5/6KTL-L1



Active Safety



Higher Yields



2x POWER Battery Ready

[+ info](#)

Model	Maximum Power	Maximum Efficiency	Nominal Power	MPPT	Protection
SUN2000L-2KTL-L1	2200 VA	98.2%	2000 W	2	IP65
SUN2000L-3KTL-L1	3300 VA	98.3 %	3000 W		
SUN2000L-3.68KTL-L1	3680 VA	98.4 %	3680 W		
SUN2000L-4KTL-L1	4400 VA	98.4 %	4000 W		
SUN2000L-4.6KTL-L1	5000 VA	98.4 %	4600 W		
SUN2000L-5KTL-L1	5500 VA	98.4 %	5000 W		
SUN2000L-6KTL-L1	6000 VA	98.4 %	6000 W		

Smart Energy Center

SUN2000-3/4/5/6/8/10KTL-M1



Active Safety



Higher Yields



Flexible Communication

[+ info](#)

Model	Maximum Power	Maximum Efficiency	Nominal Power	MPPT	Protection
SUN2000-3KTL-M1	3300 VA	98.2%	3000 W	2	IP65
SUN2000-4KTL-M1	4400 VA	98.3%	4000 W		
SUN2000-5KTL-M1	5500 VA	98.4%	5000 W		
SUN2000-6KTL-M1	6600 VA	98.6%	6000 W		
SUN2000-8KTL-M1	8800 VA	98.6%	8000 W		
SUN2000-10KTL-M1	11000 VA	98.6%	10000 W		

Smart String Inverter

SUN2000-12/15/17/20KTL-M2



Active Safety



Higher Yields



Flexible Communication

[+ info](#)

Model	Maximum Power	Maximum Efficiency	Nominal Power	MPPT	Protection
SUN2000-12KTL-M2	13200 VA	98.50%	12000 W	2	IP65
SUN2000-15KTL-M2	16500 VA	98.65%	15000 W		
SUN2000-17KTL-M2	18700 VA	98.65%	17000 W		
SUN2000-20KTL-M2	22000 VA	98.65%	20000 W		

Smart String Inverter

SUN2000-30/36/40KTL-M3



Smart



Efficient



Safe



Reliable

[+ info](#)

Model	Maximum Power	Maximum Efficiency	Nominal Power	MPPT	Protection
SUN2000-30KTL-M3	33000 VA	98.7%	30000 W	4	IP66
SUN2000-36KTL-M3	40000 VA		36000 W		
SUN2000-40KTL-M3	44000 VA		40000 W		

Smart String Inverter

SUN2000-50KTL-M3

NEW



Active Safety



Higher Yields



Flexible Communication

[+ info](#)

Model	Maximum Power	Maximum Efficiency	Nominal Power	MPPT	Protection	AC Voltage	DC Voltage
SUN2000-50KTL-M3	55,000 VA	98.7%	50,000W	4	IP66	400V	1,100V

Smart String Inverter

SUN2000-100KTL-M2

NEW



10 MPP Trackers



98.8% (@480V)
Max. Efficiency



String-level Management



Smart I-V Curve
Diagnosis Supported



MBUS
Supported



Fuse Free
Design



Surge Arresters
for DC & AC



IP66
Protection

[+ info](#)

Model	Maximum Power	Maximum Efficiency	Nominal Power	MPPT	Protection	AC Voltage	DC Voltage
SUN2000-100KTL-M2	110,000 VA	98.6% @ 400 V, 98.8% @ 480 V	100,000 W	10	IP66	400 V	1,100V

Smart String Inverter

SUN2000-115KTL-M2

NEW



10 MPP Trackers



98.8% (@480V)
Max. Efficiency



String-level Management



Smart I-V Curve
Diagnosis Supported



MBUS
Supported



Fuse Free
Design



Surge Arresters
for DC & AC



IP66
Protection

[+ info](#)

Model	Maximum Power	Maximum Efficiency	Nominal Power	MPPT	Protection	AC Voltage	DC Voltage
SUN2000-115KTL-M2	125,000 VA	98.6% @400 V, 98.8% @480 V	115,000 W	10	IP66	400 V	1,100V

String Inverter

SUN2000-330KTL-H1

NEW



[+ info](#)

Model	Maximum Power	Maximum Efficiency	Nominal Power	MPPT	Protection
SUN2000-330KTL-H1	33000 VA	≥99.0%	300,000 W	6	IP66

Company

Established in 2010, GoodWe is a world-leading PV inverter and energy storage solutions provider, with the research and manufacturing of PV inverters and energy storage solutions at its core.

GoodWe is listed as a public limited company on the Shanghai Stock Exchange (Stock Code: 688390), with a long-standing strong presence in the solar market. GoodWe PV inverters have seen an accumulative installation of 35 GW in more than 100 countries in residential and commercial rooftops, industrial and utility scale systems and range from 0.7kW to 250kW. GoodWe has more than 4,000 employees situated in over 20 different countries and is regarded as the Global Top 3 storage inverter supplier by Wood Mackenzie in 2021.

GoodWe's financial stability has landed it the highest Altman-Z score among PV manufacturers on BloombergNEF's 2021 report, displaying its strong financial health and bankability, and until today is the sole inverter brand that has won the TÜV Rheinland All Quality Award for 7 consecutive years (2015-2021). In 2022 GoodWe was awarded the Silver Medal by EcoVadis, placing the company in the top 14% of 100,000+ companies across 175 countries: a firm statement of the company's commitment to a sustainable, smart energy future.

DRIVING THE WORLD'S SMART ENERGY FUTURE

In numbers:

- 4.000+ employees.
- 700+ employees working in R&D.
- 35 GW installed globally.



XS Series

Single-MPPT, Single-Phase



- ⊙ A4 size
- ⊙ Light weight
- ⊙ 30% DC oversizing
- ⊙ 97% European Efficiency
- ⊙ LAN/WIFI communication

[+ info](#)

Model	Maximum Power	Maximum Efficiency	Nominal Power	MPPT	Protection
GW700-XS	910	97.2%	700	1	IP65
GW1000-XS	1300	97.2%	1000		
GW1500-XS	1950	97.3%	1500		
GW2000-XS	2600	97.5%	2000		
GW2500-XS	3250	97.4%	2500		
GW3000-XS	3900	97.4%	3000		

DNS Series

Dual-MPPT, Single-Phase



- ⊙ Lowest startup voltage at 120V
- ⊙ Wide range of MPPT voltage
- ⊙ Small, lightweight and easy to install
- ⊙ Built-in anti-reserve function
- ⊙ IP65 dustproof and waterproof
- ⊙ Fanless and noiseless

[+ info](#)

Model	Maximum Power	Maximum Efficiency	Nominal Power	MPPT	Protection
GW3000D-NS	3900	97.8%	3000	2	IP65
GW3600D-NS	4680	97.8%	3600		
GW4200D-NS	5460	97.8%	4200		
GW5000D-NS	6500	97.8%	5000		
GW6000D-NS	7200	97.8%	6000		

SDT G2 Series

Dual-MPPT, Three-Phase



- ⊙ 50% DC Input Oversizing
- ⊙ 10% AC Output Overloading
- ⊙ Built-in Anti-reverse current
- ⊙ Arc-Fault circuit interrupter

[+ info](#)

Model	Maximum Power	Maximum Efficiency	Nominal Power	MPPT	Protection
GW4K-DT	6000	98.2%	4000	2	IP65
GW5K-DT	7500	98.2%	5000		
GW6K-DT	9000	98.2%	6000		
GW8K-DT	12000	98.2%	8000		
GW10KT-DT	15000	98.3%	10000		
GW12KT-DT	18000	98.3%	12000		
GW15KT-DT	22500	98.3%	15000		

SDT G2 Series

Dual-MPPT, Three-Phase



- ⦿ 50% DC Input Oversizing
- ⦿ 10% AC Output Overloading
- ⦿ Built-in Anti-reverse current
- ⦿ Arc-Fault circuit interrupter

[+ info](#)

Model	Maximum Power	Maximum Efficiency	Nominal Power	MPPT	Protection
GW17KT-DT	25500	98.4%	17000	2	IP65
GW20KT-DT	30000	98.4%	20000		
GW25KT-DT	37500	98.4%	25000		

SDT G2 PLUS+ Series

Dual-MPPT, Three-Phase



- ⦿ Smart Shadow Scan with adjustable scan interval
- ⦿ Multi-protocol compatibility for smart home integration
- ⦿ Optional AFCI and Optional exchangeable DC Type II SPD & SPD failure alarm
- ⦿ Up to 200% DC input oversizing & 110% AC output overloading
- ⦿ Up to 16 A max. DC input current per stringCompatible with high-power 182mm/210mm modules
- ⦿ Fanless design for quiet operations
- ⦿ Elegant and compact design

[+ info](#)

Model	Max. AC Active Power (W)	Maximum Efficiency	Nominal Output Power (W)	MPPT	Protection
GW4000-SDT-20	4400	98.2%	4000	2	IP65
GW5000-SDT-20	5500	98.2%	5000		
GW6000-SDT-20	6600	98.2%	6000		
GW8000-SDT-20	8800	98.3%	8000		
GW10KSDT-20	11000	98.3%	10000		
GW12KSDT-20	13200	98.4%	12000		
GW12KLVSDT-20	12000	96.9%	12000		
GW15KSDT-20	16500	98.4%	15000		
GW17KSDT-20	18700	98.4%	17000		
GW20KSDT-20	22000	98.4%	20000		

SMT Series

Three-MPPT, Three-Phase



- ⦿ Compact and lightweight
- ⦿ 30% DC input oversizing
- ⦿ Up to 10% AC output overloading
- ⦿ Wide MPPT range from 200 V to 950 V
- ⦿ IP65 dustproof and waterproof

[+ info](#)

Model	Maximum Power	Maximum Efficiency	Nominal Power	MPPT	Protection
GW25K-MT	32500	98.7%	25000	3	IP65
GW30K-MT	39000	98.8%	30000		
GW36K-MT	42900	98.8%	36000		

SMT Series

Up to 6 MPPTs, Three Phase



- ⦿ Smart Control & Monitoring
- ⦿ Superb Safety & Reliability
- ⦿ Friendly & Thoughtful Design
- ⦿ High Power Generation for High Returns

[+ info](#)

Model	Maximum Efficiency	Nominal Power	MPPT	Protection
GW50KS-MT	98.6%	50 kW	5	IP65
GW60KS-MT		60 kW	6	

HT Series

100-136kW | Up to 12 MPPTs | Three Phase



- ⊙ String Level Monitoring
- ⊙ Dynamic power export limit
- ⊙ IP66 and C5 protection
- ⊙ Optional Type I Surge Protection & AFCI
- ⊙ Full load running at 45°C
- ⊙ Up to 12 MPPTs
- ⊙ Easy and quick configuration via Bluetooth
- ⊙ Power line communication

[+ info](#)

Model	Max. AC Active Power (kW)	Maximum Efficiency	Nominal Output Power (kW)	MPPT	Protection
GW100K-HT	110	98.6%	100	10	IP66
GW110K-HT	121		110	12	
GW120K-HT	132		120		

HT Series

225/250kW | Three phase | 6/12 MPPTs



- ⊙ String level monitoring
- ⊙ Real-time monitoring
- ⊙ Smart string protection switch
- ⊙ Type II SPD for both DC and AC
- ⊙ AC terminal ready for 300mm² aluminum cables
- ⊙ Reactive power compensation at night
- ⊙ 20A max. current per string
- ⊙ Anti-PID function

[+ info](#)

Model	Max. AC Active Power (kW)	Maximum Efficiency	Nominal Output Power (kW)	MPPT	Protection
GW225K-HT	247.5	99.0%	225	12	IP66
GW250K-HT	250		250		
GW225KN-HT	247.5		225	6	
GW250KN-HT	250		250		

ET Plus + Series

5-10kW | Three Phase | Hybrid Inverter



- ⊙ Smart load control
- ⊙ 150% DC input oversizing
- ⊙ 100% unbalanced output
- ⊙ In-built Type II SPD for DC
- ⊙ Battery ready option
- ⊙ <10ms UPS-level switching

[+ info](#)

Model	Max. Input Power (W)	Maximum Efficiency	Nominal Power	MPPT	Protection
GW5K-ET	7500	98.0%	5000	2	IP66
GW6.5K-ET	9700		6500		
GW8K-ET	12000	98.2%	8000		
GW10K-ET	15000		10000		

ET PLUS+ Series16A

5-10kW | Three Phase | Hybrid Inverter



- ⊙ Smart load control
- ⊙ Peak shaving
- ⊙ In-built Type II SPD on DC side
- ⊙ IP66 ingress protection
- ⊙ Fanless cooling for quiet operation
- ⊙ Elegant and compact design
- ⊙ Battery ready option
- ⊙ Maximum 16A DC input current per string

[+ info](#)

Model	Max. Input Power (W)	Maximum Efficiency	Nominal Power	MPPT	Protection
GW5KN-ET	7500	98.0%	5000	2	IP66
GW6.5KN-ET	9700		6500		
GW8KN-ET	12000	98.2%	8000		
GW10KN-ET	15000		10000		

ES Series

3.6-5kW | Single Phase | Hybrid Inverter



- ⊙ Charge controller and inverter integrated
- ⊙ Export control (Zero export)
- ⊙ Safe and reliable UPS function with automatic switchover time of 10 ms
- ⊙ Maximum charge and discharge up to 100A
- ⊙ IP65 dustproof and waterproof
- ⊙ Fanless design, long lifespan

[+ info](#)

Model	Max. DC Input Power (W)	Maximum Efficiency	Nominal Power	MPPT	Protection
GW3648D-ES	4600	97.6%	3680	2	IP65
GW5048D-ES	6500	97.6%	4600		

ES G2 Series

3-6kW | Single Phase | 2 MPPTs |
Hybrid inverter (LV)

COMING SOON



- ⊙ Smart load control with dry contacts
- ⊙ Smart home integration with multi-protocol communications
- ⊙ Optional AFCI on DC side
- ⊙ Remote Shutdown
- ⊙ Plug & Play
- ⊙ Elegant and compact design
- ⊙ Maximum 16A DC input current per string and high-power module compatibility
- ⊙ Strong backup power supply

[+ info](#)

Model	Max. DC Input Power (W)	Maximum Efficiency	Nominal Power	MPPT	Protection
GW3000-ES-20	4500	97.6%	3000	1	IP65
GW3600-ES-20	5400		3680		
GW3600M-ES-20	5400		3680	2	
GW5000-ES-20	7500		5000		
GW5000M-ES-20	7500		5000		
GW6000-ES-20	9000		6000		
GW6000M-ES-20	9000		6000		

EM Series

3-5kW | Single Phase | LV Hybrid Inverter



- ⦿ Smart battery management function
- ⦿ Export control (Zero export)
- ⦿ Safe and reliable UPS function with automatic switchover time of 10 ms
- ⦿ 50A charge & discharge capacity
- ⦿ IP65 dustproof and waterproof
- ⦿ Fanless design, long lifespan

[+ info](#)

Model	Maximum Power	Maximum Efficiency	Nominal Power	MPPT	Protection
GW3048-EM	3900	97.6%	3000	1	IP65
GW3648-EM	4600	97.6%	3680	2	
GW5048-FM	6500	97.6%	5000		

EH Series

3.6-6kW | Single phase | 2 MPPTs | Hybrid ready (HV)



- ⦿ <10ms UPS-level switching
- ⦿ Smart home integration with multi-protocol communications
- ⦿ IP65 ingress protection
- ⦿ Quality and robust components
- ⦿ Fanless cooling for quiet operation
- ⦿ Pre-wired communication cables
- ⦿ Strong backup power supply
- ⦿ Wide battery voltage range 85~450V

[+ info](#)

Model	Max. Input Power (W)	Maximum Efficiency	Nominal Power	MPPT	Protection
GW3600-EH	4800	97.6%	3600	2	IP65
GW5000-EH	6650		5000		
GW6000-EH	8000		6000		

EH PLUS+ Series

3.6-6kW | Single Phase | 2 MPPTs | Battery Ready (HV)



- ⊙ <10ms UPS-level switching
- ⊙ Peak shaving
- ⊙ Built-in Type II SPD on DC side
- ⊙ IP65 ingress protection
- ⊙ Fanless cooling for quiet operation
- ⊙ Pre-wired communication cables
- ⊙ Battery ready option
- ⊙ Maximum 16A DC input current per string

[+ info](#)

Model	Max. Input Power (W)	Maximum Efficiency	Nominal Power	MPPT	Protection
GW3600N-EH	5400	97.6%	3600	2	IP65
GW5000N-EH	7500		5000		
GW6000N-EH	9000		6000		

BH Series

3-6kW | Single phase | AC-coupled retrofit inverter (HV)



- ⊙ <10ms UPS-level switching
- ⊙ Smart home integration with multi-protocol communications
- ⊙ IP65 ingress protection
- ⊙ Quality and robust components
- ⊙ Fanless cooling for quiet operation
- ⊙ Pre-wired communication cables
- ⊙ Strong backup power supply
- ⊙ Wide battery voltage range 85~450V

[+ info](#)

Model	Max. Input Power (W)	Maximum Efficiency	Nominal Power	MPPT	Protection
GW3600-EH	4800	97.6%	3600	2	IP65
GW5000-EH	6650		5000		
GW6000-EH	8000		6000		

BT Series

5-10kW | Three phase | AC-coupled retrofit inverter (HV)



- ⦿ <10ms UPS-level switching
- ⦿ Smart home integration with multi-protocol communications
- ⦿ IP65 ingress protection
- ⦿ Quality and robust components
- ⦿ Fanless cooling for quiet operation
- ⦿ Elegant and compact design
- ⦿ 110% AC output overloading
- ⦿ Wide battery voltage range 180 ~ 600V

[+ info](#)

Model	Max. Input Power (W)	Maximum Efficiency	Nominal Power	Protection
GW5K-BT	5000	97.6%	5000	IP66
GW6K-BT	6000		6000	
GW8K-BT	8000		8000	
GW10K-BT	10000		10000	

SBP G2 Series

3.6-6kW | Single Phase | AC-coupled retrofit inverter (LV)

COMING SOON



- ⦿ <10ms UPS-level switching
- ⦿ Smart home integration with multi-protocol communications
- ⦿ IP65 ingress protection
- ⦿ Remote Shutdown
- ⦿ Plug & Play
- ⦿ Elegant and compact design
- ⦿ AC-coupled battery storage retrofit solution
- ⦿ Suitable for both single-phase & three-phase systems

[+ info](#)

Model	Max. Input Power (W)	Maximum Efficiency	Nominal Power	Protection
GW3600-SBP-20	3600	95.5%	3680	IP65
GW5000-SBP-20	5000		5000	
GW6000-SBP-20	6000		6000	



GoodWe Certification

[+ info](#)

Company

Growatt was established in 2011 by a group of pioneers in the global PV industry with a vision to build a green and sustainable future. Specializing in sustainable energy generation, storage and consumption, as well as energy digitalization, the company designs, develops and manufactures PV inverters, energy storage products, EV chargers, smart energy management system and others.

Favored by global customers, Growatt ranks among the global top three PV inverter suppliers*. In particular, the company is ranked the number one residential inverter supplier globally* as well as the world's largest supplier of user-side energy storage inverters* in terms of shipment volume.

Since its foundation, Growatt has been committed to continuous product and technology innovations. With a well-established R&D platform and a R&D team of more than 650 professionals, the company constantly introduces new upgrades and innovations in the energy efficiency, functional safety and intelligent solutions of inverter, energy storage and EV charging applications. Till now, it has obtained more than 150 patents.

Mission

To enable everyone to benefit from sustainable energy.

Vision

To build the world's largest intelligent sustainable energy ecosystem for human kind.



Smart photovoltaic inverter

MIC 750~3300 TL-X



- Maximum efficiency of 97.6%
- Compact design
- Touch key& OLED display
- Flexible monitoring options
- AFCI optional

[+ info](#)

Model	Maximum Power	Maximum Efficiency	Nominal Power	MPPT	Protection
MIC 750TL-X	1050W	97.4%	750W	1	IP65
MIC 1000TL-X	2100W		1000W		
MIC 1500TL-X	2100W		1500W		
MIC 2000TL-X	2800W		2000W		
MIC 2500TL-X	3500W	97.6%	2500W		
MIC 3000TL-X	4200W		3000W		
MIC 3300TL-X	4290W		3300W		

Smart photovoltaic inverter

MOD 3000~9000 TL3-X



- Max. efficiency 98.6%
- OLED and touch button
- Type II SPD on DC and AC side
- String Monitoring
- AFCI function ready

[+ info](#)

Model	Maximum Power	Maximum Efficiency	Nominal Power	MPPT	Protection
MOD 3000TL3-X	4500W	98.3%	3000W	1	IP66
MOD 4000TL3-X	6000W		4000W		
MOD 5000TL3-X	7500W		5000W		
MOD 6000TL3-X	9000W		6000W		
MOD 7000TL3-X	10500W	98.6%	7000W		
MOD 8000TL3-X	12000W		8000W		
MOD 9000TL3-X	13500W		9000W		

Planting A Greener Future

With thoughts created in 2010, SolaX Power has grown year on year to become a world recognised international company, with offices in the UK, Netherlands, Germany, Australia and the USA. This growth reflects the increased demand for renewable energy products across the world. SolaX Power strive to continue to be at the forefront of the solar power revolution with a huge commitment to the research and development ensuring it's products remain the market leading solution.

SolaX Power envision a clean, sustainable future powered by renewable energy. By pushing back the boundaries with what is possible in solar inverter technology, SolaX Power have been able to produce some of the most efficient solar inverters on the market today, enabling our customers to harness even more of the free, clean energy available to us from the sun.

The Solax Power Vision

SolaX Power envisions a clean, sustainable future powered by renewable energy. By pushing the boundaries with what is possible in solar inverter technology, Solax Power has been able to produce some of the most efficient solar inverters on the market today, enabling our customers to harness even more of the free, clean energy available to us from the sun.



Single Phase String Inverter

X1-Mini



**Low Start-Up
Voltage**



**High
Efficiency**



**Small &
compact sizw**



**IP66
Rated**

[+ info](#)

Model	Maximum Power	Maximum Efficiency	Nominal AC Power	MPPT	Protection
X1-0.6-S-D(L) / X1-0.6-S-N(L)	900	98%	600	1	IP66
X1-0.7-S-D(L) / X1-0.7-S-N(L)	1050		700		
X1-1.1-S-D(L) / X1-1.1-S-N(L)	1650		1100		
X1-1.5-S-D(L) / X1-1.5-S-N(L)	2200		1500		
X1-2.0-S-D(L) / X1-2.0-S-N(L)	3000		2000		
X1-2.5K-S-D(L) / X1-2.5K-S-N(L)	3750		2500		
X1-3.0K-S-D(L) / X1-3.0K-S-N(L)	4500		3000		
X1-3.3K-S-D(L) / X1-3.3K-S-N(L)	4950		3300		
X1-3.6K-S-D(L) / X1-3.6K-S-N(L)	5400		3680		

Single Phase String Inverter

X1-BOOST



**Easy to install
and setup**



**High
Efficiency**



**Remote
upgrade and
maintenance**



**IP66
Rated**

[+ info](#)

Model	Maximum Power	Maximum Efficiency	Nominal AC Power	MPPT	Protection
X1-3.0-T-D(L) / X1-3.0-T-N(L)	4500	97.80%	3000	2/1	IP66
X1-3.3-T-D(L) / X1-3.3-T-N(L)	4950		3300		
X1-3.6-T-D(L) / X1-3.6-T-N(L)	5400		3680		
X1-4.2-T-D(L) / X1-4.2-T-N(L)	6300		4200		
X1-4.6-T-D(L) / X1-4.6-T-N(L)	6900		4600		
X1-5.0-T-D(L) / X1-5.0-T-N(L)	7500		5000		
X1-5.5K-T-D(L) / X1-5.5K-T-N(L)	8250		5500		
X1-6.0K-T-D(L) / X1-6.0K-T-N(L)	9000		6000		

Three Phase String Inverter

X3-MIC G2



**Low Start-Up
Voltage**



**High
Efficiency**



**Small &
compact sizw**



**IP66
Rated**

[+ info](#)

Model	Maximum Power	Maximum Efficiency	Nominal AC Power	MPPT	Protection
X3-MIC-3K-G2	6000	98.3%	3000	2(1/1)	IP66
X3-MIC-4K-G2	8000		4000		
X3-MIC-5K-G2	10000		5000		
X3-MIC-6K-G2	12000		6000		
X3-MIC-8K-G2	16000		8000		
X3-MIC-10K-G2	20000		10000		
X3-MIC-12K-G2	24000		12000		
X3-MIC-15K-G2	30000		15000		

Company

Hoymiles is a world's leading microinverter company specializing in MLPE (Module Level Power Electronics) solutions for global solar investors & end users.

As one of the fastest growing solar inverter brands globally, Hoymiles has offered a safer, smarter & easier module-level MPPT & module-level monitoring microinverter in over 50 countries covering the United States, Europe, the UK, Australia, LATAM, India, Japan, Korea, South East Asia, Middle East & South Africa.

Back in 2008, Hoymiles was founded by 3 post-doctors as a R&D team in China's National Power Electronics Lab based at Zhejiang University, one of the top 3 universities in China and one of the top 60 in the world.

In 2015, Hoymiles microinverter achieved the world's No.1 CEC peak efficiency - 96.7% in California, the United States, by which Hoymiles was ranked worldwide as the most efficient microinverter, in comparison with other reputable and respectable microinverter brands known among global installers & end users.

Today, 10,000+ commercial & residential roof-top installations (the biggest one 3.6MW) are built annually with different types of Hoymiles microinverters: single panel unit (MI-250/300), 2 in 1 unit (MI-500/600/700) & 4 in 1 unit (MI-1000/1200).

With constant efforts of Hoymiles 500+ staff & local distribution/service partners all over the world, Hoymiles has established its local logistics & Service in over 20 countries, e.g. Germany, Netherlands, Poland, Estonia, Brazil, Mexico, South Africa, the United States, Canada, Korea & India etc., LOCALIZATION combined with local warehouses, local training & local service centers keeps Hoymiles together with local customers 24/7/365.



Hoymiles

HM-300/350/400



Warranty



Easy installation, just plug and play



External antenna for stronger communication with DTU



Power factor (adjustable) 0.8 leading... ... 0.8 lagging



High reliability
NEMA (IP67) enclosure
6000V surge protection

[+ info](#)

Model	DC Power	Peak Efficiency	Output Power	Weight (kg)	Dimensions
HM-300	240 ~ 380	96.70%	300	1.98	182 x 164 x 29.5 mm
HM-350	280-440		350		
HM-400	320-500		400		

Hoymiles

HM-600/700/800



Warranty



Easy installation, just plug and play



External antenna for stronger communication with DTU



Power factor (adjustable) 0.8 leading... ... 0.8 lagging



Compliant with VDE-AR-N 4105: 2018 & EN50549-1: 2019



High reliability
NEMA (IP67) enclosure
6000V surge protection

[+ info](#)

Model	DC Power	Peak Efficiency	Output Power	Weight (kg)	Dimensions
HM-600	240 ~ 380	96.70%	600	3.0 Kg	250 x 170 x 28 mm
HM-700	280-440		700		
HM-800	320-500		800		

Hoymiles

HM-1000/1200/1500



Warranty



Easy installation, just plug and play



External antenna for stronger communication with DTU



Power factor (adjustable) 0.8 leading... ... 0.8 lagging



High reliability
NEMA (IP67) enclosure
6000V surge protection



The highest power density microinverter on the market
Compliant with VDE-AR-N 4105: 2018 & EN50549-1: 2019

[+ info](#)

Model	DC Power	Peak Efficiency	Output Power	Weight (kg)	Dimensions
HM-1000	200 ~ 310	96.70%	1000	3.75 Kg	280 x 176 x 33 mm
HM-1200	240-380		1200		
HM-1500	300-470		1500		

Hoymiles

HMT-1800/2250



Warranty



Three-phase output, more suitable for commercial and industrial applications.



Each microinverter supports up to 6 modules, faster installation and lower cost.



Up to 2250VA output, adapted to mainstream high-powered PV modules.



With Reactive Power Control, meets the requirements of EN50549-1:2019, VDE-AR-N 4105:2018, TOR Erzeuger : 2019-12, etc.



The Sub-1G wireless solution enables the stable communication when installed for commercial and industrial stations.

[+ info](#)

Model	DC Power	Peak Efficiency	Output Power	Weight (kg)	Dimensions
HMT-1800	240 ~ 380	96.0%	1800	5.5 Kg	330 x 250 x 35 mm
HMT-2250	300-470		2250	6.0 Kg	330 x 250 x 37 mm

Hoymiles

HMS-400/450/500

NEW



Warranty

- High-powered microinverter for 1-in-1 with output power up to 500 VA
- With Reactive Power Control, compliant with EN 50549-1:2019, VDE-AR-N 4105:2018, UL 1741, etc
- Safer for rooftop solar stations with rapid shutdown compliance and isolated transformer
- Connected to one panel, flexible for various applications
- Sub-1G wireless solution allows stable communication with Hoymiles gateway DTU

[+ info](#)

Model	Commonly used module power (W)	Peak Efficiency	Output Power	Weight (kg)	Dimensions
HMS-400	320 to 500+	96.5%	400	1.75 Kg	182 × 164 × 30 mm
HMS-450	360 to 565+		450		
HMS-500	400 to 625+		500		

Hoymiles

HMS-800/900/1000

NEW



Warranty

- High-powered microinverter for 1-in-1 with output power up to 500 VA
- With Reactive Power Control, compliant with EN 50549-1:2019, VDE-AR-N 4105:2018, UL 1741, ABNT NBR 16150, etc.
- Safer for rooftop solar stations with rapid shutdown compliance and isolated transformer
- Connected to one panel, flexible for various applications
- 2-in-1 design enables faster installation
- Sub-1G wireless solution allows stable communication with Hoymiles gateway DTU

[+ info](#)

Model	Commonly used module power (W)	Peak Efficiency	Output Power	Weight (kg)	Dimensions
HMS-800-2T	320 to 540+	96.7%	800	3.1 Kg	261 × 223 × 31 mm
HMS-900-2T	360 to 600+	96.5%	900		
HMS-1000-2T	400 to 670+	96.5%	1000		

Hoymiles

HMS-1600/1800/2000

NEW



12-25
YEARS

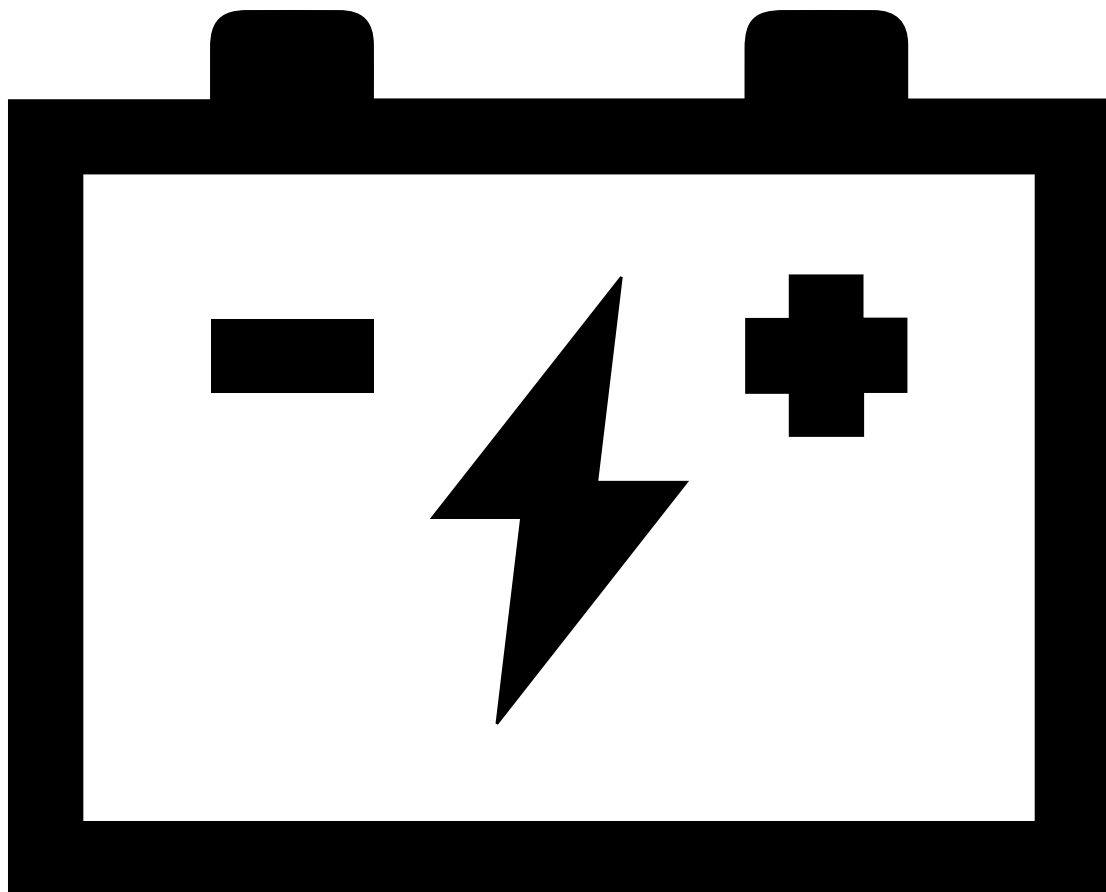
Warranty

- High-powered microinverter with output power up to 2000 VA
- Independent MPPT and monitoring ensure greater energy harvest and easier maintenance
- With Reactive Power Control, compliant with EN 50549-1:2019, VDE-AR-N 4105:2018, UL 1741, ABNT NBR 16150, etc.
- 4-in-1 design enables faster installation and comes with a lower cost
- Safer for rooftop solar stations with rapid shutdown compliance and isolated transformer
- Sub-1G wireless solution allows stable communication in commercial and industrial settings

[+ info](#)

Model	Commonly used module power (W)	Peak Efficiency	Output Power	Weight (kg)	Dimensions
HMS-1600-4T	320 to 540+	96.5%	1600	4.7 Kg	261 × 223 × 31 mm
HMS-1800-4T	360 to 600+		1800		
HMS-2000-4T	400 to 670+		2000		





Batteries



[+ video](#)

Company

Huawei, a leading global ICT and network energy solutions provider, serves more than one-third of the world's population. We have nearly 188,000 employees, and we operate in more than 170 countries and regions, serving more than three billion people around the world. With over CNY480 billion invested into R&D over the past decade, Huawei continues to innovate based on customer needs and are committed to enhancing customer experience and delivering maximum value.

FusionSolar

With an established presence in solar markets worldwide, Huawei provides new generation string inverters with smart management technology to create a fully digitalized Smart PV Solution – FusionSolar®. FusionSolar® is smart, safe and reliable whilst consistently delivering high yields and ROI, making Huawei the preferred choice for investors and developers worldwide. Huawei has been ranked as No.1 in the world for global inverter shipments from 2015 to 2018.



Smart String Battery

LUNA2000-5/10/15-S0



More Usable Energy



Flexible Investment



Safe & Reliable



Easy Installation



Quick Commissioning



Perfect Compatibility

[+ info](#)

Model	Max. output power	Dimension	Weight	Protection
LUNA2000-5-S0	2.5 kW	670 x 150 x 600 mm	63.8 kg	IP55
LUNA2000-10-S0	5 kW	670 x 150 x 960 mm	113.8 kg	
LUNA2000-15-S0	5 kW	670 x 150 x 1320 mm	163.8 kg	

Company

Established in 2010, GoodWe is a world-leading PV inverter and energy storage solutions provider, with the research and manufacturing of PV inverters and energy storage solutions at its core.

GoodWe is listed as a public limited company on the Shanghai Stock Exchange (Stock Code: 688390), with a long-standing strong presence in the solar market. GoodWe PV inverters have seen an accumulative installation of 35 GW in more than 100 countries in residential and commercial rooftops, industrial and utility scale systems and range from 0.7kW to 250kW. GoodWe has more than 4,000 employees situated in over 20 different countries and is regarded as the Global Top 3 storage inverter supplier by Wood Mackenzie in 2021.

GoodWe's financial stability has landed it the highest Altman-Z score among PV manufacturers on BloombergNEF's 2021 report, displaying its strong financial health and bankability, and until today is the sole inverter brand that has won the TÜV Rheinland All Quality Award for 7 consecutive years (2015-2021). In 2022 GoodWe was awarded the Silver Medal by EcoVadis, placing the company in the top 14% of 100,000+ companies across 175 countries: a firm statement of the company's commitment to a sustainable, smart energy future.

DRIVING THE WORLD'S SMART ENERGY FUTURE

In numbers:

- 4.000+ employees.
- 700+ employees working in R&D.
- 35 GW installed globally.



**Power Whenever
You Need**

Residential & Small Commercial
Energy Storage Solutions

Lynx Home U Series – Low Voltage



- ⦿ **Safe & Reliable**
- ⦿ **Independent Operation in Parallel**
- ⦿ **Install Anywhere Anyhow**
- ⦿ **Great User Experience**

[+ info](#)

Model	Max. Charge Current	Dimension	Weight	Protection
LX U5.4-L	50A	505 x 175 x 570 mm (LX U5.4-L)	57 kg	IP65 (Outdoor / Indoor)
2*LX U5.4-L	100A		114 kg	
3*LX U5.4-L			171 kg	
4*LX U5.4-L			228 kg	
5*LX U5.4-L			285 kg	
6*LX U5.4-L			342 kg	

Lynx Home S Series



- ⦿ **Charge Your Battery within ONE HOUR**
- ⦿ **Auto Under-voltage Reboot**
- ⦿ **Remote Diagnosis & Upgrade**
- ⦿ **IP65 Protection Level**

[+ info](#)

Model	Max. Charge Current	Dimension	Weight	Protection
LX S7.5-H	50A (1C)	610 x 226 x 1170 mm	126 kg	IP65 (Outdoor / Indoor)
LX S10-H		610 x 226 x 1445 mm	163 kg	
LX S13-H		1220 x 226 x 1170 mm	200 kg	
LX S15-H		1220 x 226 x 1170 mm	237 kg	
LX S18-H		1220 x 226 x 1445 mm	274 kg	
LX S20-H		1220 x 226 x 1445 mm	311 kg	

GoodWe

Lynx C Series



- ⦿ Reliable and safe LFP battery cells
- ⦿ Compact design
- ⦿ Remote monitoring & updates via inverter

[+ info](#)

Model	Usable Energy (kWh)	Dimension	Weight	Protection
LX C101-10	101.38	1155 × 1650 × 730	1120kg	IP21
LX C120-10	119.81		1280 kg	
LX C138-10	138.24	1155 × 2065 × 730	1480 kg	
LX C156-10	156.67		1650 kg	

Energizer[®]

HardCase

PROFESSIONAL

Anywhere. Anytime.

The Energizer HardCase Professional range of portable power stations are built to last. Whether you're on-site or in the field, you can rely on Energizer for safe, durable power.

Energizer HardCase Professional range of portable power stations can be used anywhere, anytime.



Energizer – Portable Power

Everest PPS 100



[+ info](#)

Model	Capacity	USB-A Port	USB-C Port	Dimensions	Weight
Everest PPS 100	108 Wh (3.6V/30000 mAh)	2 x 5V/2.4A Output Port	1 x 5V-20V / 60W Max, Input/Output Port	83 x 83 x 210 mm	1.08 kg

Energizer – Portable Power

Everest 300



- ⦿ Lightweight and durable
- ⦿ Hours of extended battery life for your devices
- ⦿ Multiple outputs to power just about anything
- ⦿ Long lasting and ultra safe Lithium Ion batteries
- ⦿ Splash and dustproof protective housing

[+ info](#)

Model	Capacity	USB-A Port	USB-C Port	Dimensions	Weight
Everest 300	289 Wh (3.7V/78000 mAh)	5V/3.1A	1 x 5V-12V/3.0A 18W Max 1 x 5V-20V/3.0A 45W Max	260 x 210 x 140 mm	4 kg

Energizer – Portable Power

Everest 500



TOUGH & DURABLE



ADVANCED BATTERY MANAGEMENT



CHARGE VIA SOLAR PANEL



MULTI -FUNCTION LCD SCREEN & FLASHLIGHT



AC OUTLET

[+ info](#)

Model	Capacity	USB-A Port	USB-C Port	Dimensions	Weight
Everest 500	515Wh (34.8Ah,14.8V)	USB 1: QC 3.0, 18W, USB 2: 5V 2.4A, USB 3: 5V 2.4A, USB 4: 5V 2.4A	PD 60W (5V 3A/9V 3A /12V 3A/15V 3A / 20V 3A)	260 x 172 x 171 mm	5.6 kg

Energizer – Portable Power

Everest 1100



TOUGH & DURABLE



ADVANCED BATTERY MANAGEMENT



CHARGE VIA SOLAR PANEL



9 LAYERS OF SAFETY PROTECTION



2X AC OUTLET

[+ info](#)

Model	Capacity	USB-A Port	USB-C Port	Dimensions	Weight
Everest 1100	1166Wh (21.6V/54,000mAh)	USB 1: QC 3.0, 18W, USB2: QC 3.0, 18W, USB 3: 5V 2.4A, USB 4: 5V 2.4A	USB-C 1, PD 100W : 5V 3A/9V 3A/12V 3A/15V 3A/20V 5A, USB-C 2, PD 27W : 5V 3A/9V 3A/12V 2.25A	340 x 235 x 206 mm	11 kg

Energizer – Foldable Panels

SUNPACK 80W



- ⦿ Monocrystalline panel technology
- ⦿ Patented LCD Display
- ⦿ Provides clean and renewable electricity supply with 3-way charging options for Li-ion generators
- ⦿ Powered by USB or USB-C ports

[+ info](#)

Model	Peak Power	Cell efficiency	Warranty	Dimensions (unfolded)	Weight
SUNPACK 80W	80W	23%	24 months	1185 x 525 x 7 mm	3 kg

Energizer – Foldable Panels

SUNPACK 120W



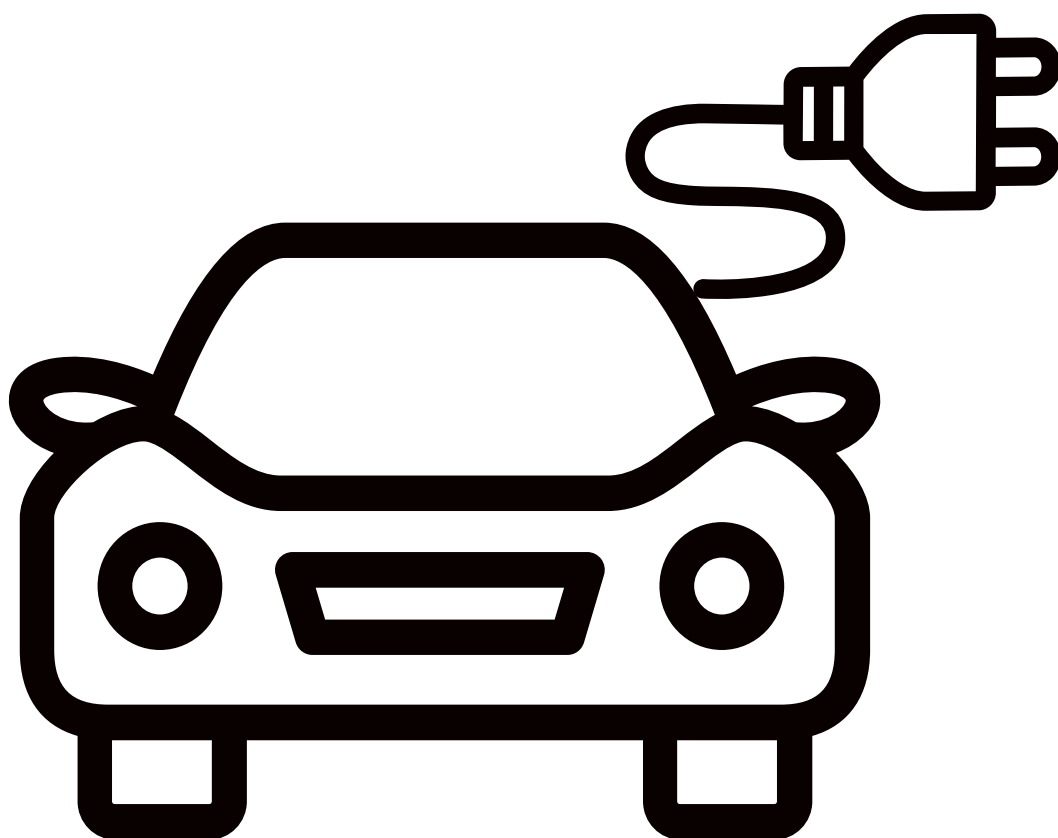
- ⦿ Monocrystalline panel technology
- ⦿ Patented LCD Display
- ⦿ Provides clean and renewable electricity supply with 3-way charging options for Li-ion generators
- ⦿ Powered by USB or USB-C ports

[+ info](#)

Model	Peak Power	Cell efficiency	Warranty	Dimensions (unfolded)	Weight
SUNPACK 120W	120W	23%	24 months	1612 x 530 x 7 mm	5.2 kg



Go **cleaner**, Go **electric**!



E-mobility



+ video

Company

Huawei, a leading global ICT and network energy solutions provider, serves more than one-third of the world's population. We have nearly 188,000 employees, and we operate in more than 170 countries and regions, serving more than three billion people around the world. With over CNY480 billion invested into R&D over the past decade, Huawei continues to innovate based on customer needs and are committed to enhancing customer experience and delivering maximum value.

FusionSolar

With an established presence in solar markets worldwide, Huawei provides new generation string inverters with smart management technology to create a fully digitalized Smart PV Solution – FusionSolar®. FusionSolar® is smart, safe and reliable whilst consistently delivering high yields and ROI, making Huawei the preferred choice for investors and developers worldwide. Huawei has been ranked as No.1 in the world for global inverter shipments from 2015 to 2018.



Ev Charger

NEW



PV Power Preferred

Power Your Car Completely with Solar

Make EV Even Greener



Automatic Phase Switch

Automatic Switch between 1 Phase and 3 Phase

More Usable Green Power



All on a Single App

Full Control Through One App

Cable E -Lock for Anti -theft



Dynamic Charging Power

Automatic Detection and Adjustment

No Worry about Overload



3 - Step Installation

Fast Installation in 16 Minutes

Wiring -free Maintenance



Auto - Authentication

Bluetooth Auto - authentication Before Charging

+ info

Model	Charge power (configurable) 1.	Dimension	Weight
AP07NEU	1.4 kW to 7 .4 kW	335 mm x 180 mm x 145 mm	3 kg
AP022NEU	1.4 kW 4 to 22 kW		3.1 kg

Company

Growatt was established in 2011 by a group of pioneers in the global PV industry with a vision to build a green and sustainable future. Specializing in sustainable energy generation, storage and consumption, as well as energy digitalization, the company designs, develops and manufactures PV inverters, energy storage products, EV chargers, smart energy management system and others.

Favored by global customers, Growatt ranks among the global top three PV inverter suppliers*. In particular, the company is ranked the number one residential inverter supplier globally* as well as the world's largest supplier of user-side energy storage inverters* in terms of shipment volume.

Since its foundation, Growatt has been committed to continuous product and technology innovations. With a well-established R&D platform and a R&D team of more than 650 professionals, the company constantly introduces new upgrades and innovations in the energy efficiency, functional safety and intelligent solutions of inverter, energy storage and EV charging applications. Till now, it has obtained more than 150 patents.

Mission

To enable everyone to benefit from sustainable energy.

Vision

To build the world's largest intelligent sustainable energy ecosystem for human kind.



Growatt Smart EV Charger

NEW



- ⦿ Compatible with all branded EV
- ⦿ Integration in existing & new-installed PV system
- ⦿ APP smart control & smart scheduling
- ⦿ IP65 design for indoor or outdoor use
- ⦿ Charge EV with 100% renewable energy by surplus solar power

[+ info](#)

Model	Input voltage	Dimension	Weight
THOR 03AS-S (WIFI/4G)	230V AC	240/380/164mm	7kg
THOR 07AS-P (WIFI/4G)			9.5kg
THOR 07AS-S (WIFI/4G)			7kg

Company

Established in 2010, GoodWe is a world-leading PV inverter and energy storage solutions provider, with the research and manufacturing of PV inverters and energy storage solutions at its core.

GoodWe is listed as a public limited company on the Shanghai Stock Exchange (Stock Code: 688390), with a long-standing strong presence in the solar market. GoodWe PV inverters have seen an accumulative installation of 35 GW in more than 100 countries in residential and commercial rooftops, industrial and utility scale systems and range from 0.7kW to 250kW. GoodWe has more than 4,000 employees situated in over 20 different countries and is regarded as the Global Top 3 storage inverter supplier by Wood Mackenzie in 2021.

GoodWe's financial stability has landed it the highest Altman-Z score among PV manufacturers on BloombergNEF's 2021 report, displaying its strong financial health and bankability, and until today is the sole inverter brand that has won the TÜV Rheinland All Quality Award for 7 consecutive years (2015-2021). In 2022 GoodWe was awarded the Silver Medal by EcoVadis, placing the company in the top 14% of 100,000+ companies across 175 countries: a firm statement of the company's commitment to a sustainable, smart energy future.

DRIVING THE WORLD'S SMART ENERGY FUTURE

In numbers:

- 4.000+ employees.
- 700+ employees working in R&D.
- 35 GW installed globally.



**Power Whenever
You Need**

Residential & Small Commercial
Energy Storage Solutions

EV Charger Series

NEW



Smart charging management



Compatible with all EV brands



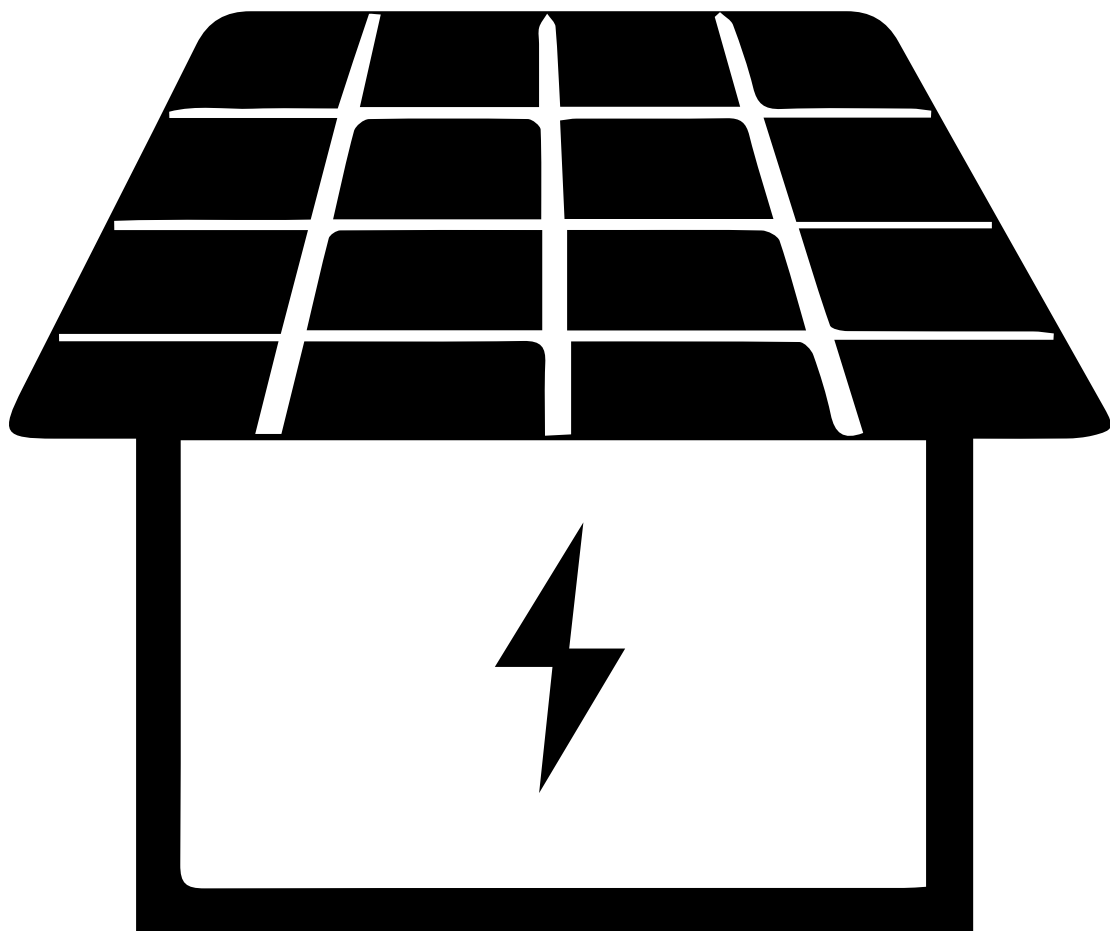
Charging cable included

[+ info](#)

Model	Input Voltage (Vac)	Output Power (W)	Dimension	Weight
GW7K-HCA	230Vac, L/N/PE	7000	256 x 603 x 170 mm	<7kg
GW11K-HCA	400Vac, 3L/N/PE	11000		<7 kg
GW22K-HCA	400Vac, 3L/N/PE	22000		<10 kg

Today's **resource** for a
brighter **tomorrow!**





Off-Grid

Company

Victron Energy is a Dutch company specialized in the design and manufacture of products for battery-based energy systems. Since 1975, Victron Energy has grown from a one-office technology startup to become an international enterprise with nearly 1,000 different products sold worldwide. In the off-grid sector, we offer reliable and innovative solutions from solar home systems to mini-grids. Our product range includes sinewave inverters, inverters-chargers, solar chargers, remote monitoring and even more. Our network of distributors, authorised installers and service partners covers more than 25 countries in Africa.

Off-grid and Backup

The presence of a functional electricity grid is not always as obvious as it would seem to be. An insufficient infrastructure is often the cause for an unreliable grid. Things become even more difficult when there is no grid at all. And yet you are in need of a reliable electricity supply. A local and properly functioning system is the only answer at this point. Victron Energy offers you such an answer. We are proud to offer you our modern translation for freedom and independence. Energy, Anytime, Anywhere.



SmartSolar

MPPT 100/30 & 100/50



- ⦿ Bluetooth Smart built-in
- ⦿ VE.Direct
- ⦿ Ultrafast Maximum Power Point Tracking (MPPT)
- ⦿ Advanced Maximum Power Point Detection in case of partial shading conditions
- ⦿ Outstanding conversion efficiency
- ⦿ Flexible charge algorithm
- ⦿ Extensive electronic protection
- ⦿ Internal temperature sensor
- ⦿ Optional external battery voltage and temperature sensing via Bluetooth
- ⦿ Fully discharged battery recovery function

[+ info](#)

Model	Rated Charge Current	Nominal PV power 12V 24V	Maximum Efficiency	Protection
SmartSolar MPPT 100/30	30A	440W 880W	98%	PV reverse polarity Output short circuit Over temperature
SmartSolar MPPT 100/50	50A	700W 1400W	98%	

SmartSolar

MPPT 150/35 & 150/45



- ⦿ Bluetooth Smart built-in
- ⦿ VE.Direct
- ⦿ Ultrafast Maximum Power Point Tracking (MPPT)
- ⦿ Advanced Maximum Power Point Detection in case of partial shading conditions
- ⦿ Outstanding conversion efficiency
- ⦿ Flexible charge algorithm
- ⦿ Extensive electronic protection
- ⦿ Internal temperature sensor
- ⦿ Optional external battery voltage and temperature sensing via Bluetooth
- ⦿ Fully discharged battery recovery function

[+ info](#)

Model	Rated Charge Current	Nominal PV power	Maximum Efficiency	Protection
SmartSolar MPPT 150/35	35A	12V: 500W 24V: 1000W 36V: 1500W 48V: 2000W	98%	PV reverse polarity Output short circuit Over temperature
SmartSolar MPPT 150/45	45A	12V: 650W 24V: 1300W 36V: 1950W 48V: 2600W	98%	

SmartSolar

MPPT 150/45 up to 150/70



- ⊙ Bluetooth Smart built-in
- ⊙ Ultra-fast Maximum Power Point Tracking (MPPT)
- ⊙ Advanced Maximum Power Point Detection in case of partial shading conditions
- ⊙ Outstanding conversion efficiency
- ⊙ Flexible charge algorithm
- ⊙ Extensive electronic protection
- ⊙ Internal temperature sensor
- ⊙ Optional external battery voltage, temperature and current sensing via Bluetooth
- ⊙ Synchronized parallel charging with Bluetooth
- ⊙ Fully discharged battery recovery function
- ⊙ VE.Direct
- ⊙ Remote on-off
- ⊙ Programmable relay
- ⊙ Optional: SmartSolar pluggable LCD display

[+ info](#)

Model	Rated Charge Current	Nominal PV power 12V 24V 36V 48V	Maximum Efficiency	Protection
SmartSolar MPPT 150/45	45A	650W 1300W 1950W 2600W	98%	PV reverse polarity
SmartSolar MPPT 150/60	60A	860W 1720W 2580W 3440W	98%	Output short circuit
SmartSolar MPPT 150/70	70A	1000W 2000W 3000W 4000W	98%	Over temperature

SmartSolar

MPPT 250/60 & 250/70



- ⊙ Bluetooth Smart built-in
- ⊙ Ultra-fast Maximum Power Point Tracking (MPPT)
- ⊙ Advanced Maximum Power Point Detection in case of partial shading conditions
- ⊙ Outstanding conversion efficiency
- ⊙ Flexible charge algorithm
- ⊙ Extensive electronic protection
- ⊙ Internal temperature sensor and optional external battery voltage and temperature sensing via Bluetooth
- ⊙ Synchronized parallel charging with Bluetooth
- ⊙ Fully discharged battery recovery function
- ⊙ VE.Direct
- ⊙ Remote on-off
- ⊙ Programmable relay
- ⊙ Optional: SmartSolar pluggable LCD display

[+ info](#)

Model	Rated Charge Current	Nominal PV power 12V 24V 36V 48V	Maximum Efficiency	Protection
SmartSolar MPPT 250/60	60A	860W 1720W 2580W 3440W	99%	PV reverse polarity
SmartSolar MPPT 250/70	70A	1000W 2000W 3000W 4000W	99%	Output short circuit
				Over temperature

MultiPlus - II

Inverter/Charger



- ⊙ A MultiPlus, plus ESS (Energy Storage System) functionality
- ⊙ PowerControl and PowerAssist - Boosting the capacity of the grid or a generator
- ⊙ Solar energy: AC power available even during a grid failure
- ⊙ Two AC Outputs
- ⊙ Virtually unlimited power thanks to parallel and three phase operation (not available for the 8k and 10k models)
- ⊙ On-site system configuring, monitoring and control
- ⊙ Remote configuring and monitoring

[+ info](#)

Model	Maximum AC input current	Peak power	Maximum Efficiency	Protection
MultiPlus-II 12/3000/120-32 24/3000/70-32 48/3000/35-32	32A	5500W	93%/94%/95%	IP22
MultiPlus-II 24/5000/120-50 48/5000/70-50	50A	9000W	96%	
MultiPlus-II 48/8000/110-100	100A	15000W	95%	
MultiPlus-II 48/10000/140-100	100A	18000W	96%	

Cerbo GX & GX Touch



- ⊙ Cerbo GX: communication-centre
- ⊙ GX Touch: display accessory
- ⊙ Remote Console on VRM
- ⊙ Perfect monitoring & control
- ⊙ Simple mounting and configuration

[+ info](#)

Model	Mounting	Outer dimensions	Supply voltage	Display Resolution
Cerbo GX	Wall or DIN rail (35mm)	78 x 154 x 48 mm	8 – 70V DC	-
GX Touch 50 / GX Touch 70	With included mounting accessories	GX Touch 50: 87 x 128 x 12.4 mm GX Touch 70: 113 x 176 x 13.5 mm	-	GX Touch 50: 800 x 480 GX Touch 70: 1024 x 600

Consult Victron energy systems design

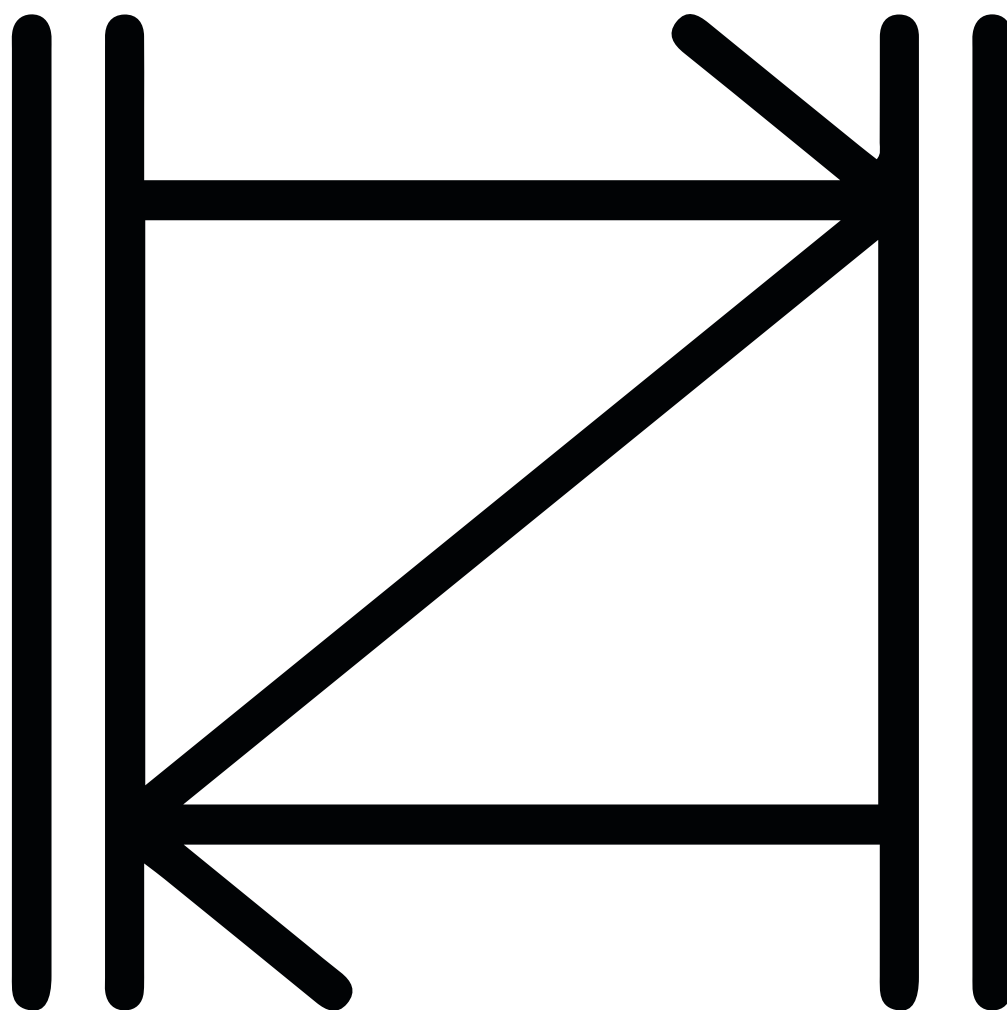
Off-Grid-backup-and-island-systems

Booklet-Off-Grid-System





let the **sun** do the **work**



Mounting Systems

Company

Esdec has supplied universal mounting systems for roof-mounted PV installations on flat and pitched roofs since 2004. With over 15 years of experience and over 7GW of solar panels installed, Esdec has developed into an international market leader.

Quick, Reliable, Innovative

Esdec was founded by installers. Convenience for the installer is always the priority in the design of Esdec products. Esdec mounting systems consist of light, sturdy components that can be mounted quickly and easily.

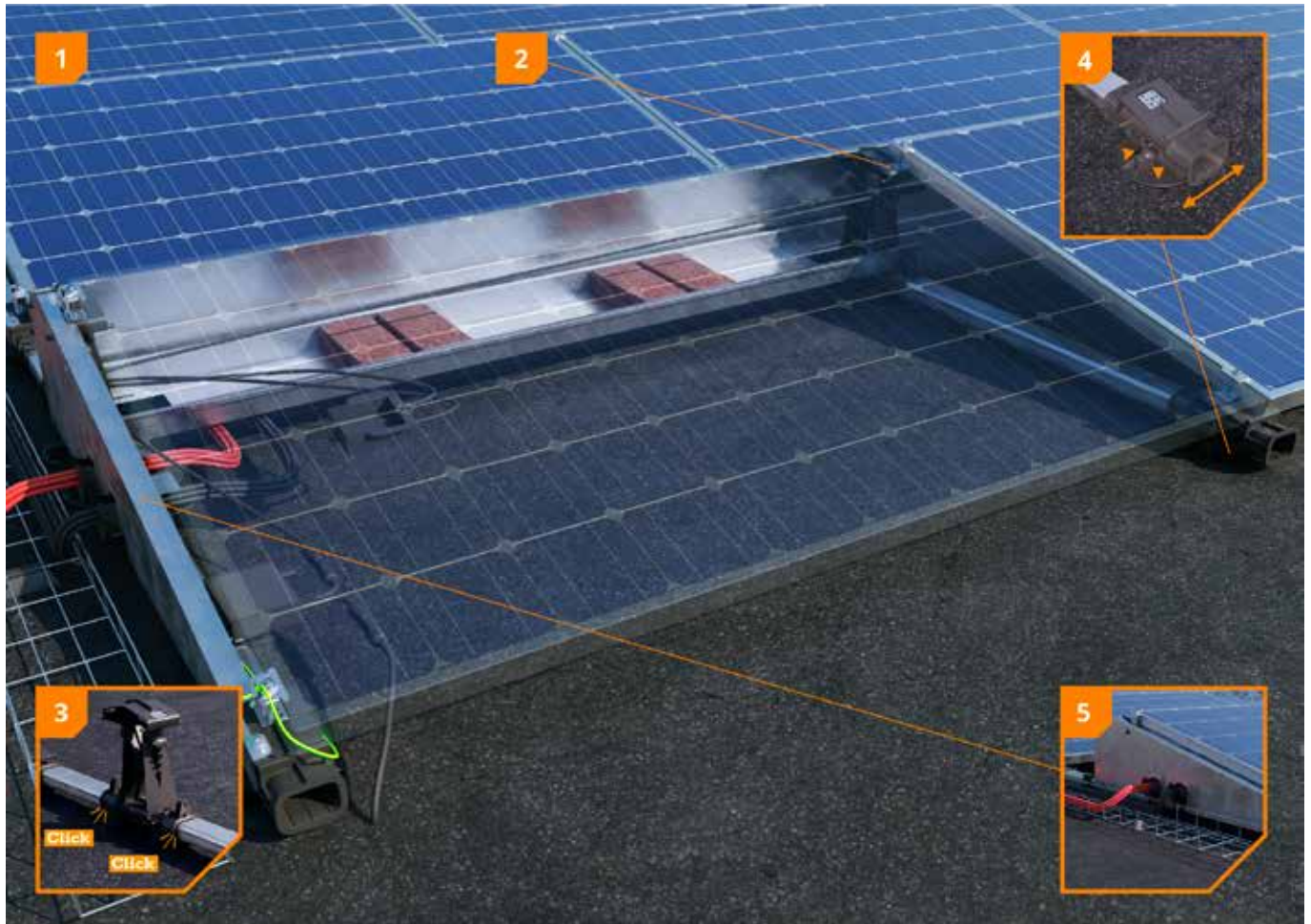
International market Leader

In recent years, the Esdec Solar Group acquired the American companies Ecofasten Solar, Iron Ridge and Quick Mount PV. With these acquisitions, Esdec is now also the market leader in the U.S. in the segment of residential PV. Esdec also has a strong focus on growth in Europe.



FLAT ROOFS

FlatFix Fusion



[Installation video](#)
[+ info](#)

Advantages for the installer

- Modular mounting solution with click connection
- Flexible installation on any roof
- Integrated grounding and equipotential bonding
- Ease of installation with optimizer ready cable clip

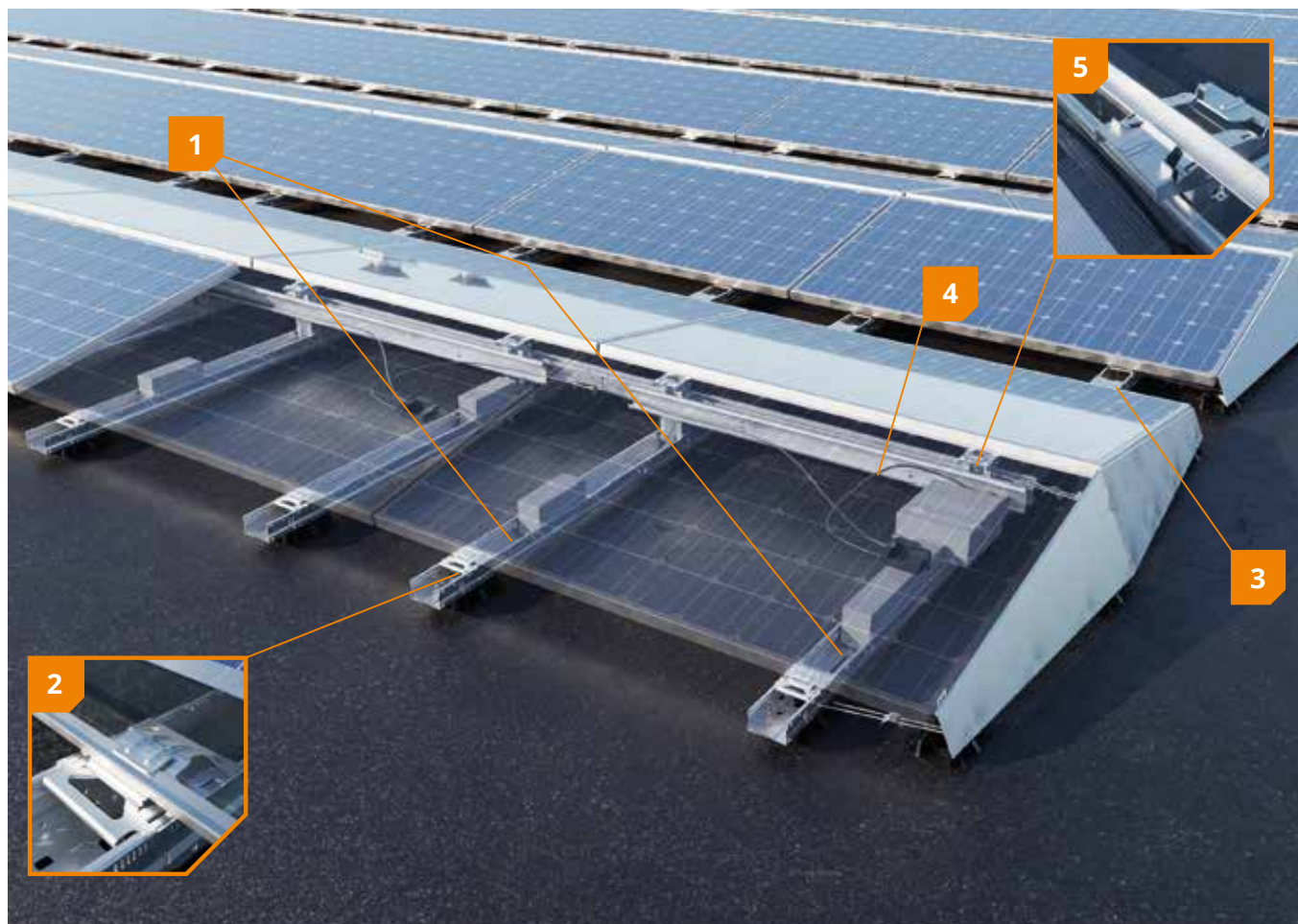
Advantages for the end user

- Roof-specific configuration
- Safe and reliable
- No damage of the roof material
- 20-year warranty

- 1** Modular click system
- 2** Lightweight system
- 3** Unique click connection
- 4** With thermal decoupling
- 5** With integrated cable management

FLAT ROOFS

FlatFix Wave Plus



Installation video
+ info

Advantages for the installer

- Super-quick and error-free installation
- No tools needed
- Easy to mount
- Integrated cable management

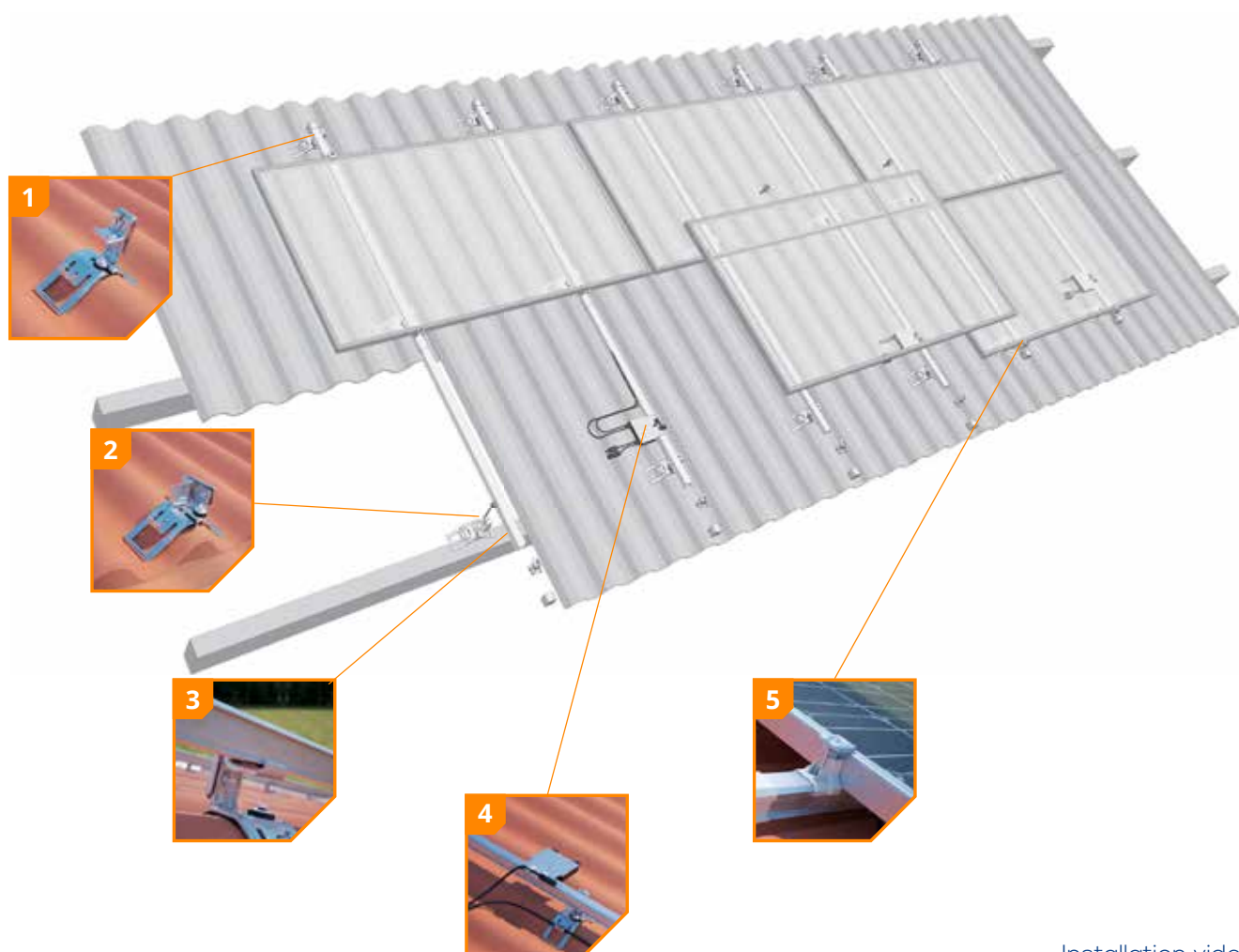
Benefits for the owner

- Maximum efficiency for commercial projects
- In accordance with the latest insurance requirements
- Use of premium materials
- 20-year warranty

- 1 2 units per panel
- 2 Unique, patented clamping system
- 3 No tools needed
- 4 Integrated cable management
- 5 Integrated bonding

PITCHED ROOFS

ClickFit EVO Corrugated roof



Installation video
+ info

The benefits for the installer

- 4 components
- 1 tool
- Easy installation on new & existing roofs
- Safe and reliable
- 20-year product warranty

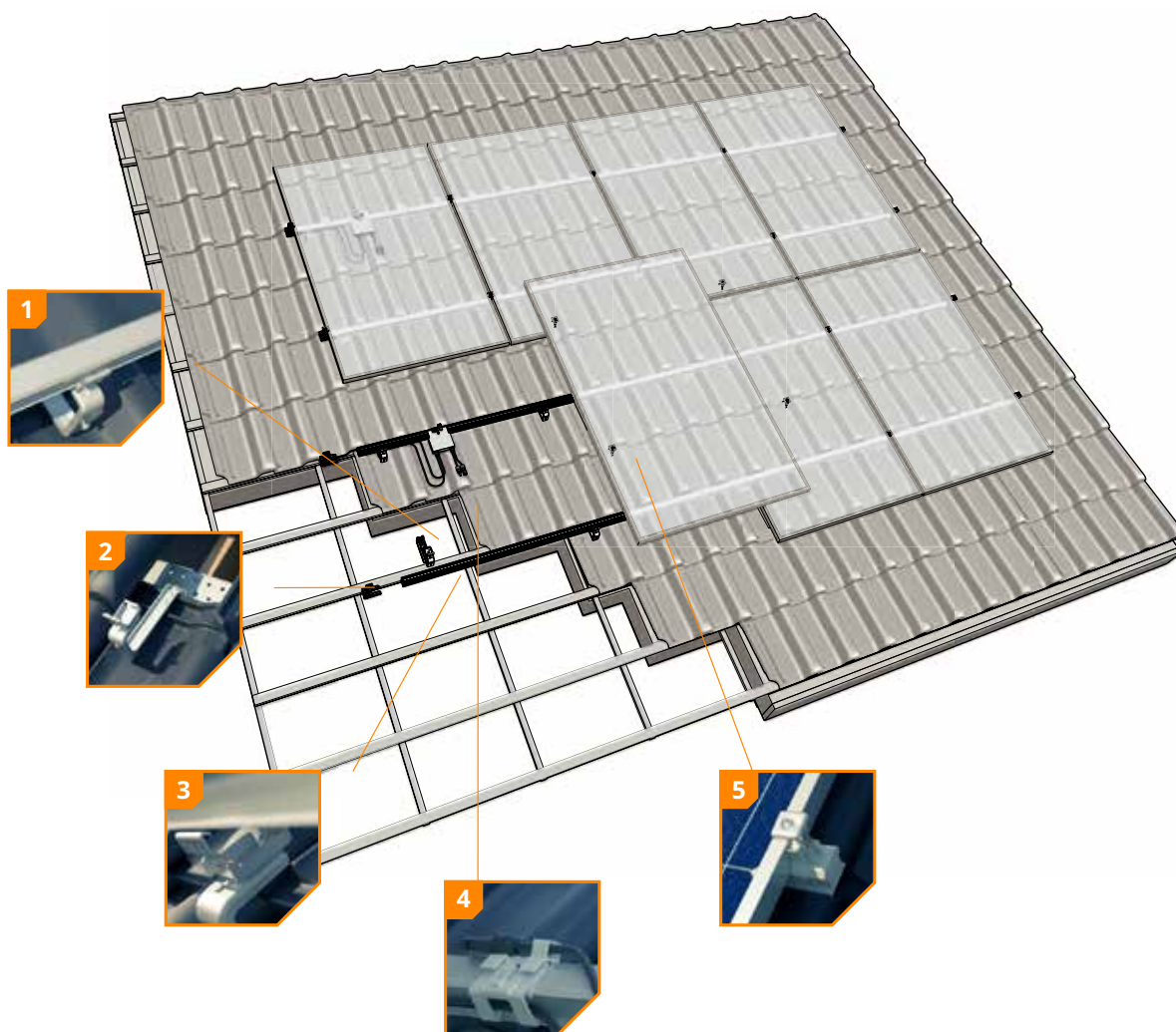
The benefits for your customer

- Rock-solid base for solar panels
- 100% waterproof
- Safe and reliable
- 20-year product warranty
- The roof stays intact

- 1 Universally adjustable**
- 2 Attachment using existing corrugated sheet screws**
- 3 Unique click connection**
- 4 Integrated cable management**
- 5 The right dimensions at all times**

PITCHED ROOFS

ClickFit EVO Tiled roof



[Installation video](#)
[+ info](#)

Benefits for the installer

- Up to 40% quicker mounting
- Only 4 components
- Light and durable
- Only 1 tool necessary
- 20 years' warranty

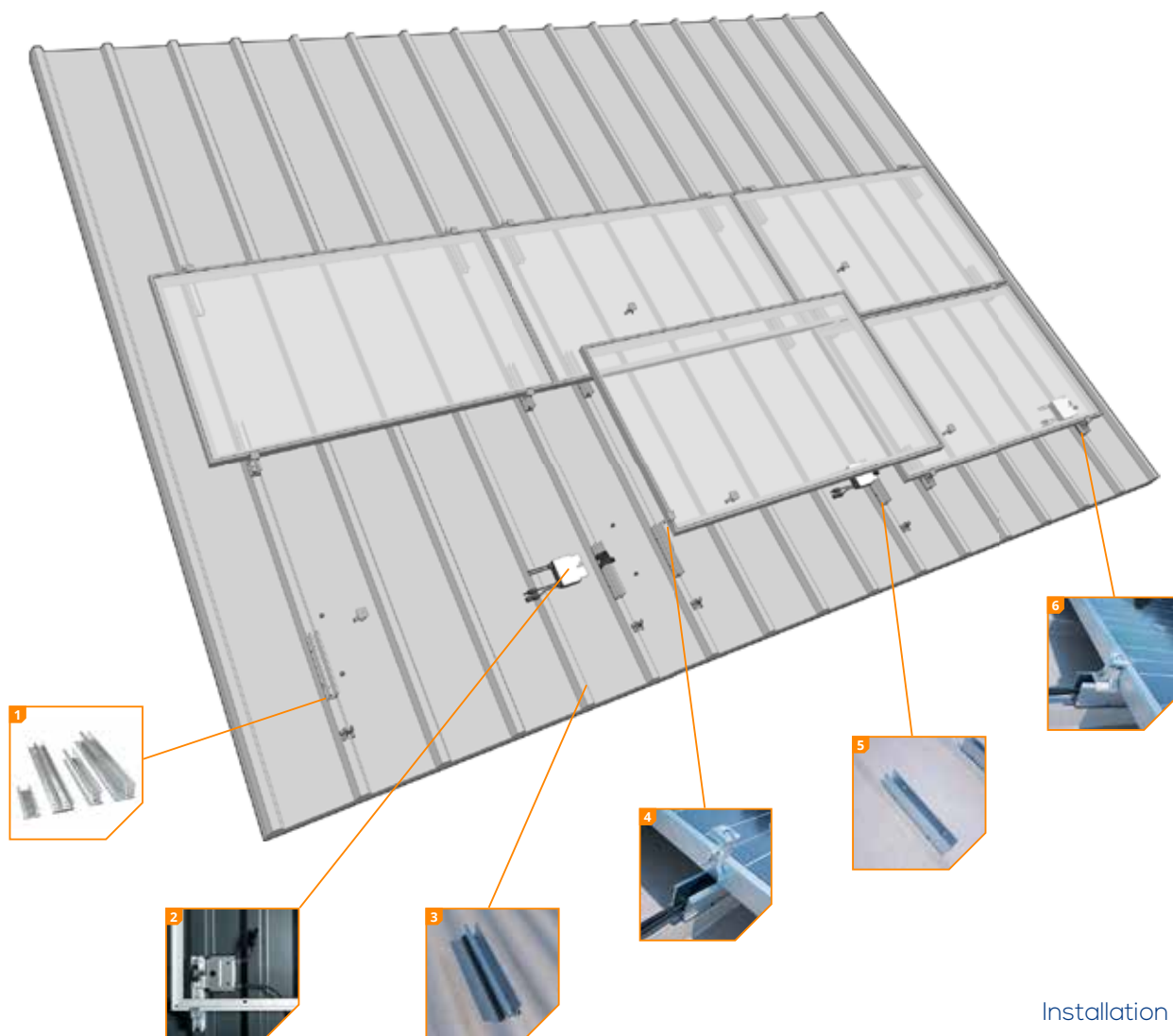
Benefits for the end user

- Rock solid basis for solar panels
- The roof stays intact
- Reliable
- 20 years' warranty

- 1** Universally adjustable
- 2** Screw option possible
- 3** Fully renewed snap connection mechanism
- 4** Integrated cable management
- 5** Always the right size

PITCHED ROOFS

ClickFit EVO Steel roof



Installation video
+ info

Benefits for the installer

- Choice of low or high mounting profiles
- No need to drill into the roof any more
- Only 4 components
- Light and strong
- 1 tool
- Optimizer clamp with cable management can be used
- Optional: adapter profile for corrugated steel roof
- 20 years warranty

Benefits for the end user

- Integrated water barrier
- Very solid base for solar panels
- No unnecessary drilling
- Safe and reliable
- 20 years warranty

- 1 Choice of 4 mounting profiles**
- 2 Fitting optimizer**
- 3 Suitable for corrugated steel roof**
- 4 Universal module clamp**
- 5 Mounting profiles with rubber seals**
- 6 Just 4 components**

PITCHED ROOFS

ClickFit EVO Arabic tiles



[Installation video](#)
[+ info](#)

Benefits for the installer

- Both landscape and portrait placement
- Four components on the roof
- Only one tool needed
- Quick and easy installation
- 20-year product warranty

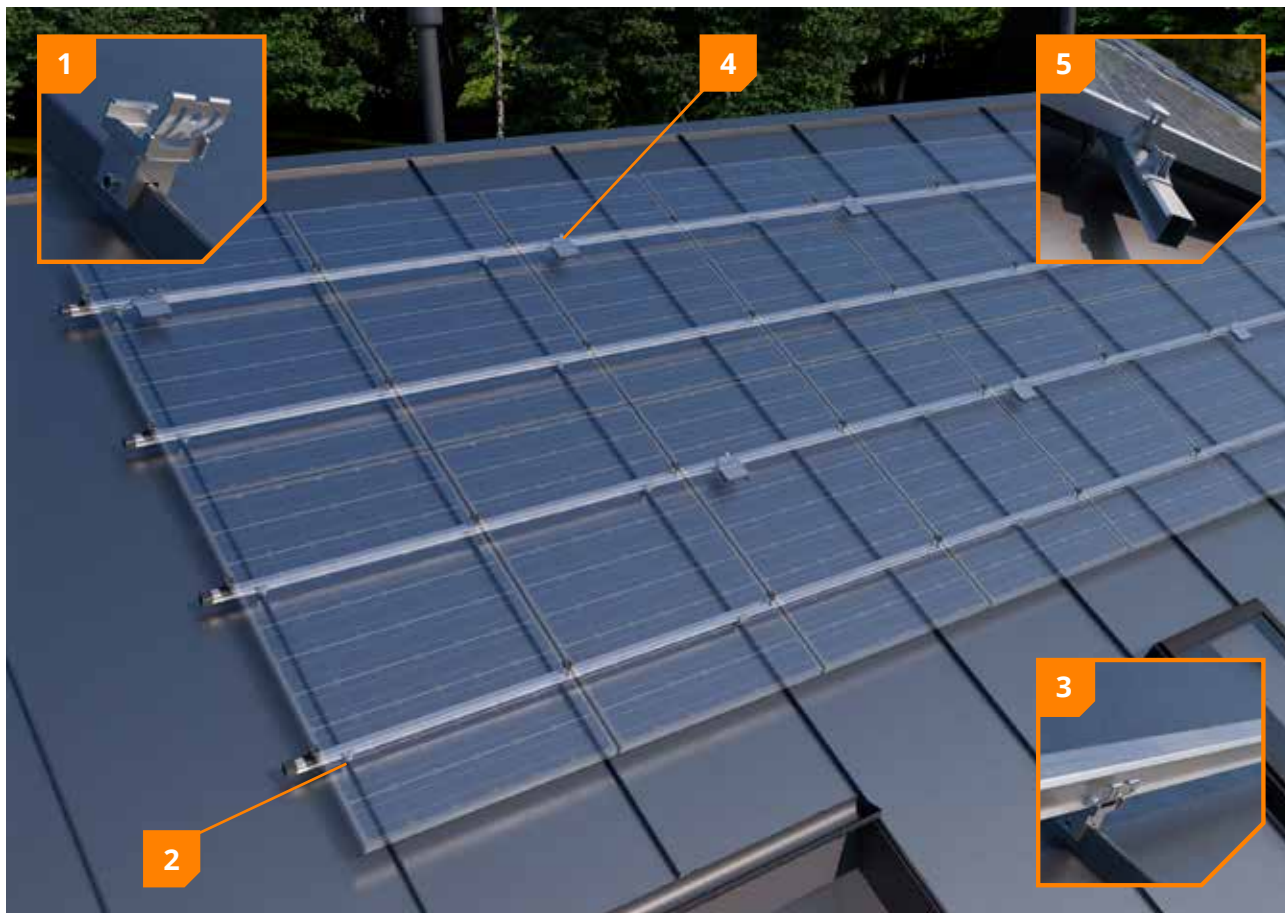
Benefits for the end user

- 100% waterproof
- Aesthetic design, also available in black
- Comprehensively tested
- 20-year product warranty

- 1** Unique hanger bolt
- 2** Fitted with a ClickFit EVO click connection
- 3** Integrated cable management
- 4** Always the right size

PITCHED ROOFS

ClickFit EVO Standing Seam Roof



Installation video
+ info

Benefits for the installer

- Pre-assembled seam clamp
- Only 4 components on the roof
- Only one tool needed
- Quick and easy installation
- 20-year product warranty

Benefits for the end user

- 100% waterproof
- The roof remains intact
- Aesthetic design, also available in black
- Extensively tested product
- 20-year product warranty

- 1 Assembled clamp**
- 2 Fixed in place with integrated torx screw**
- 3 Unique click connection**
- 4 Integrated cable management**
- 5 Always the right size**



+ video

Company

As a roof-mounting specialist, K2 systems focus on developing and optimising innovative mounting systems, while always keeping the feet on the ground. Through constant exchange with the customers, K2 can offer practical, long-lasting and secure solutions.

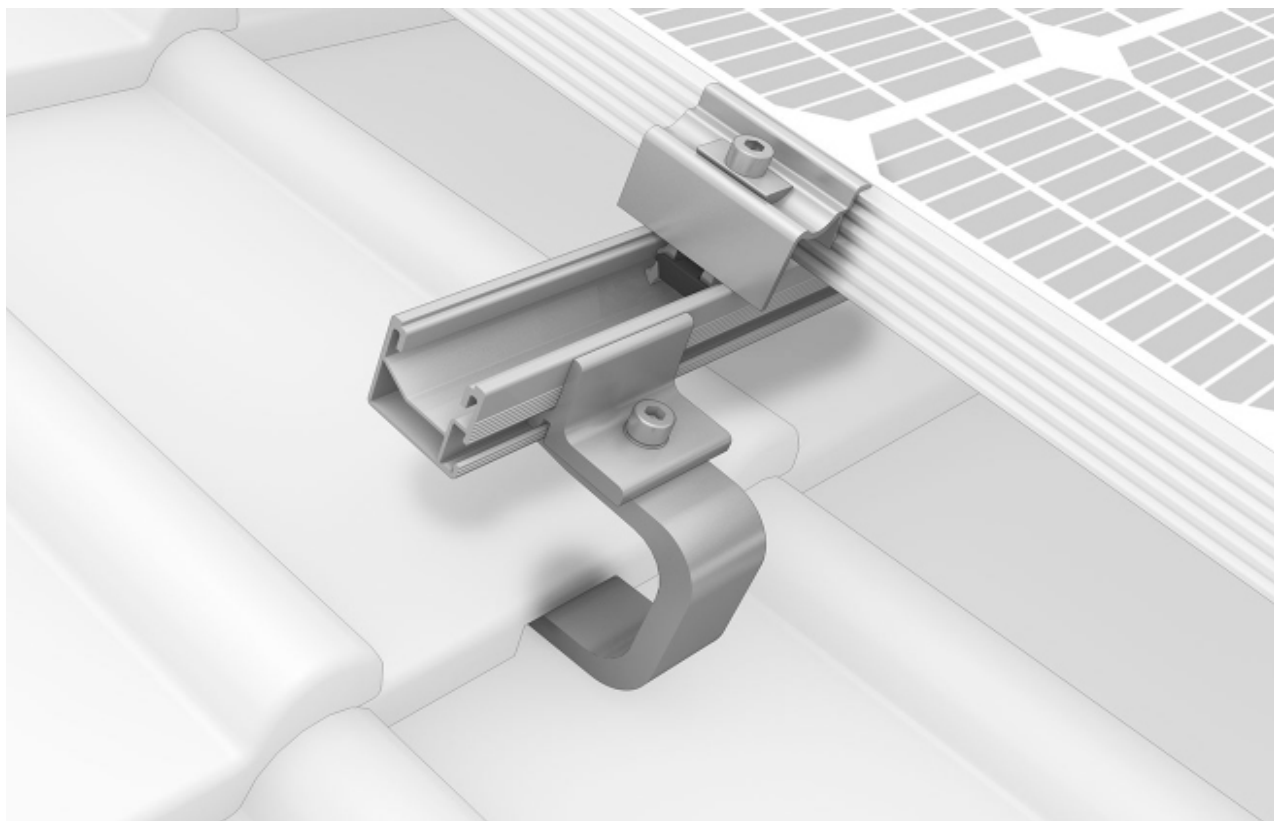
Philosophy

"We all have a responsibility to preserve the Earth as a liveable planet for future generations. K2 Systems has the know-how, the power, and the team to decisively advance the energy transition with the help of solar power. And above all: we have the will to tackle things today - and not put them off until tomorrow."



PITCHED ROOFS

SingleRail System



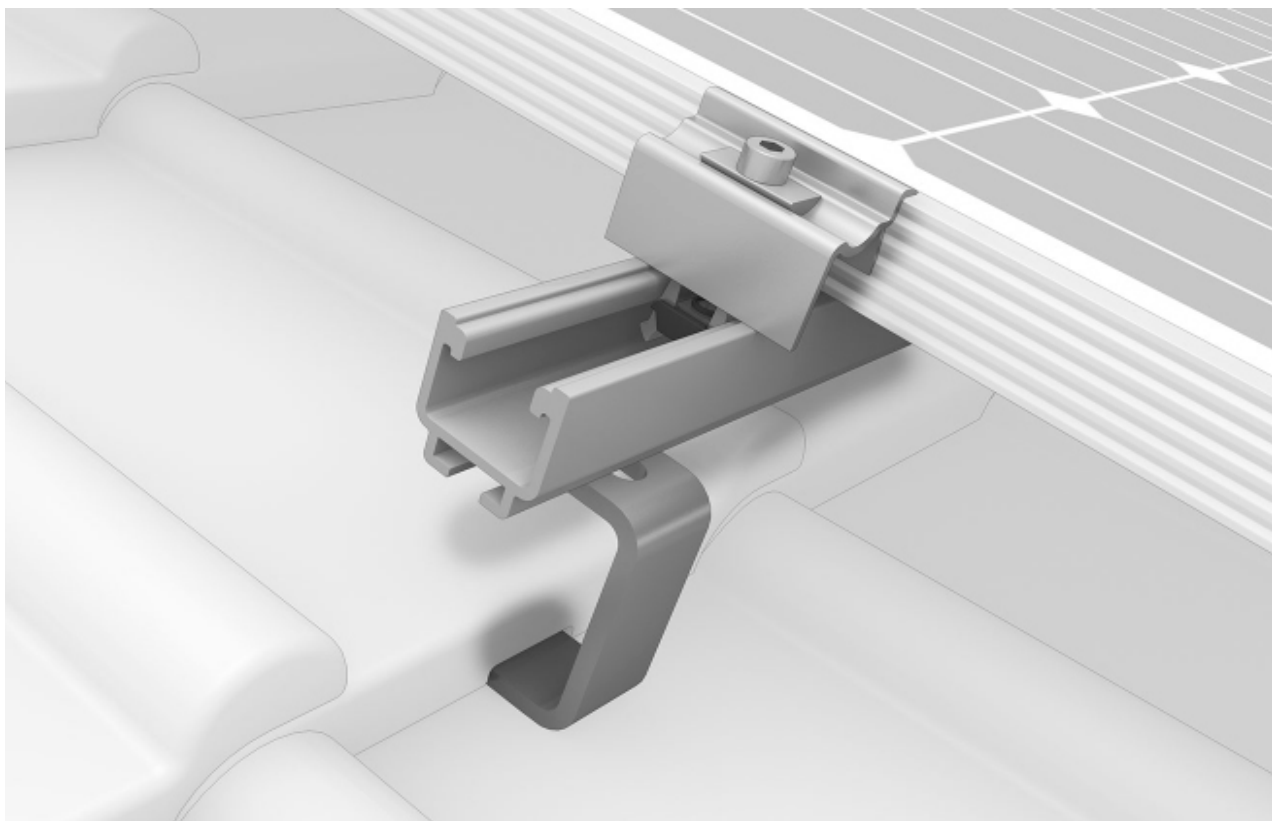
[Installation video](#)
[+ info](#)

Quick and low-cost with direct lateral connections to the rail including customised height adjustment.

The SingleRail mounting system for photovoltaic assemblies is suitable for roofing with pan tiles and corrugated fibre cement or corrugated sheet metal. The roof fastening is done using roof hooks or hanger bolts.

PITCHED ROOFS

SolidRail System



[Installation video](#)
[+ info](#)

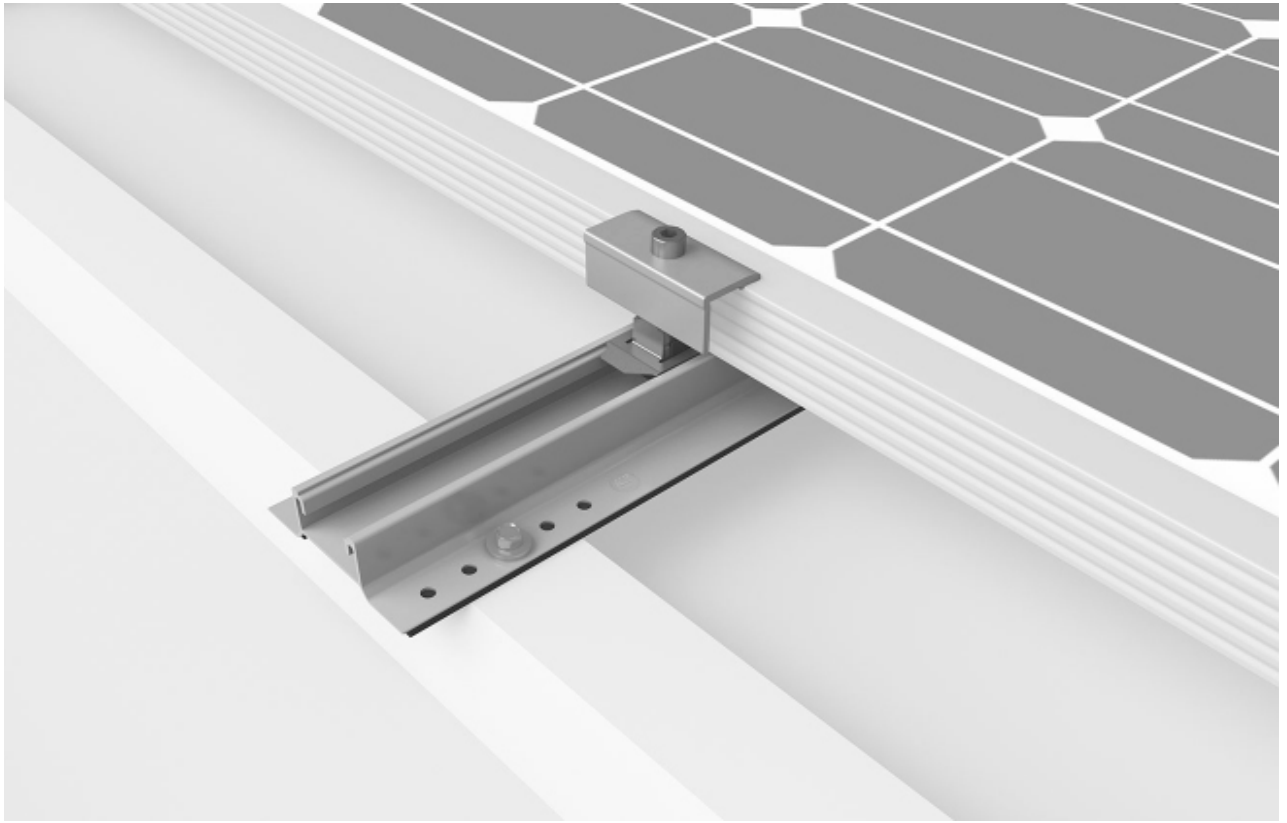
Suitable for different load cases and many ranges of spans inclusive extensive range of rails.

The SolidRail mounting system for photovoltaic assemblies is suitable for nearly all coverings. This includes pan tiles, plain tiles, slate tiles, trapezoidal sheet metal, corrugated fibre cement, corrugated sheet metal and standing seam roof.

- Comprehensive range of mounting rails for varying load profiles
- Robust, structurally proven
- High flexibility for a diverse range of widths

PITCHED ROOFS

NEW – MiniRail MK2 System



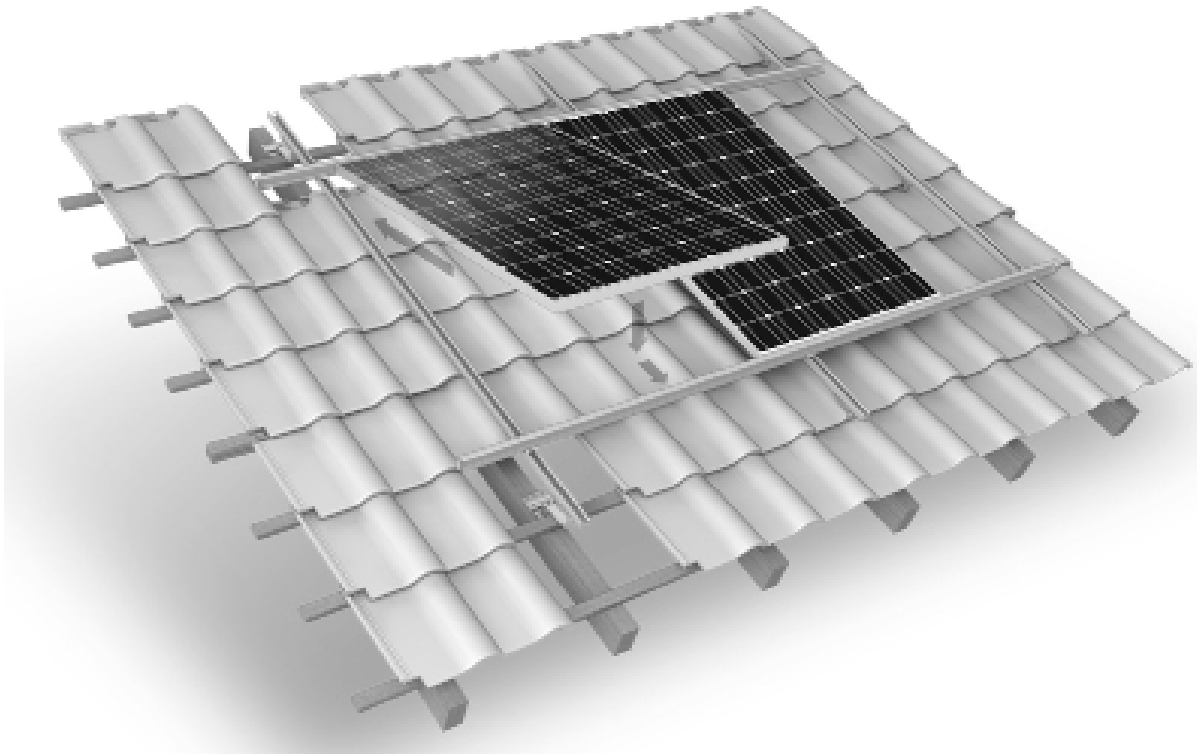
[Installation video](#)
[+ info](#)

MiniRail with MK2 rail channel - High flexibility and a wide range of applications on the roof are created. The new MK2 rail channel eliminates the need for a separate, dedicated module clamp and improves the connection of the optimisers and the elevation with RailUp.

- Innovative and statically optimised short rail system that is quick and easy to mount
- Universal module clamps and suitable for portrait and landscape orientation
- High planning reliability, optimised for storage and transport
- 5° elevation with MiniFive: significantly more output thanks to improved ventilation and optimised solar irradiation

PITCHED ROOFS

InsertionRail System



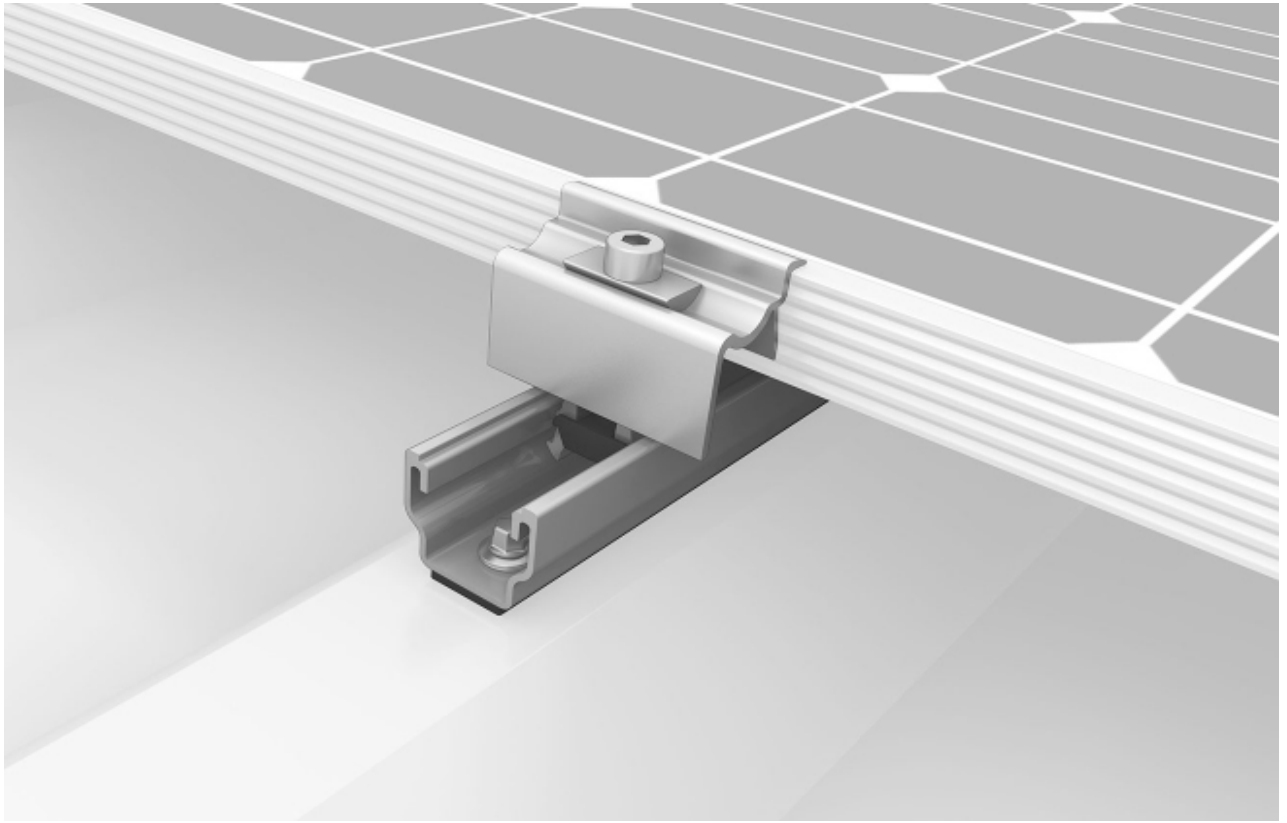
[Installation video](#)
[+ info](#)

Sleek design with continuous closed surface adds further robustness.

- It is suitable for roofing with pantiles, corrugated fibre cement or corrugated sheet metal and is fixed with roof hooks or hanger bolts.
- Sleek design with continuous closed surface adds further robustness
- Insertion profile provides additional frame reinforcement
- Without having to apply clamps eliminates the need for assistance ensuring lightning-fast installation
- Module wiring quick and easy

PITCHED ROOFS

MultiRail System



[Installation video](#)
[+ info](#)

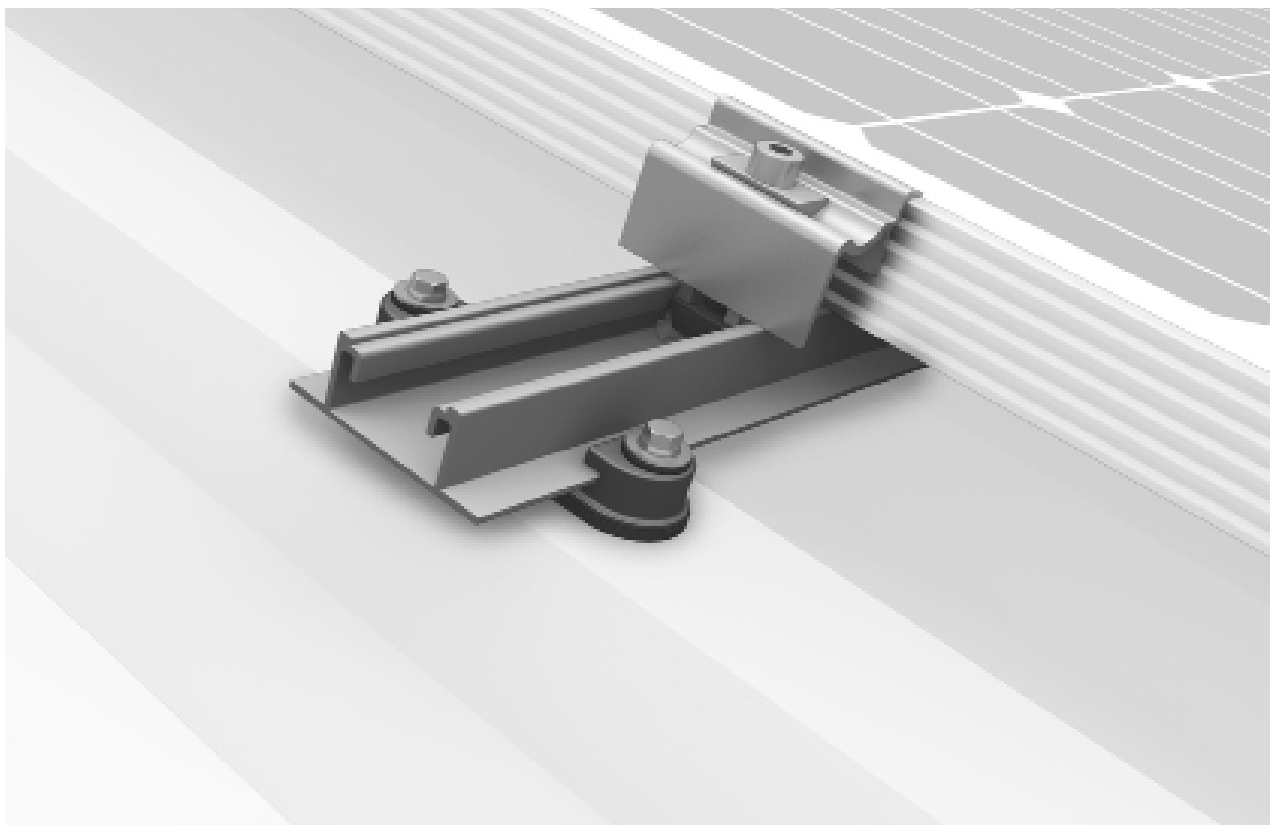
Roof connection and module railing in one single component. Short rail or a flexible component in various lengths available.

The MultiRail mounting system for photovoltaic assemblies is suitable for trapezoidal and corrugated sheet metal roofs. It blends roof connection with module railing in one single component.

- Easy and proven – as a short rail or a flexible component in various lengths
- Quick planning with less material and greater effectiveness
- Solid base rail for trapezoidal elevation with Dome 6

PITCHED ROOFS

SpeedRail System



[Installation video](#)
[+ info](#)

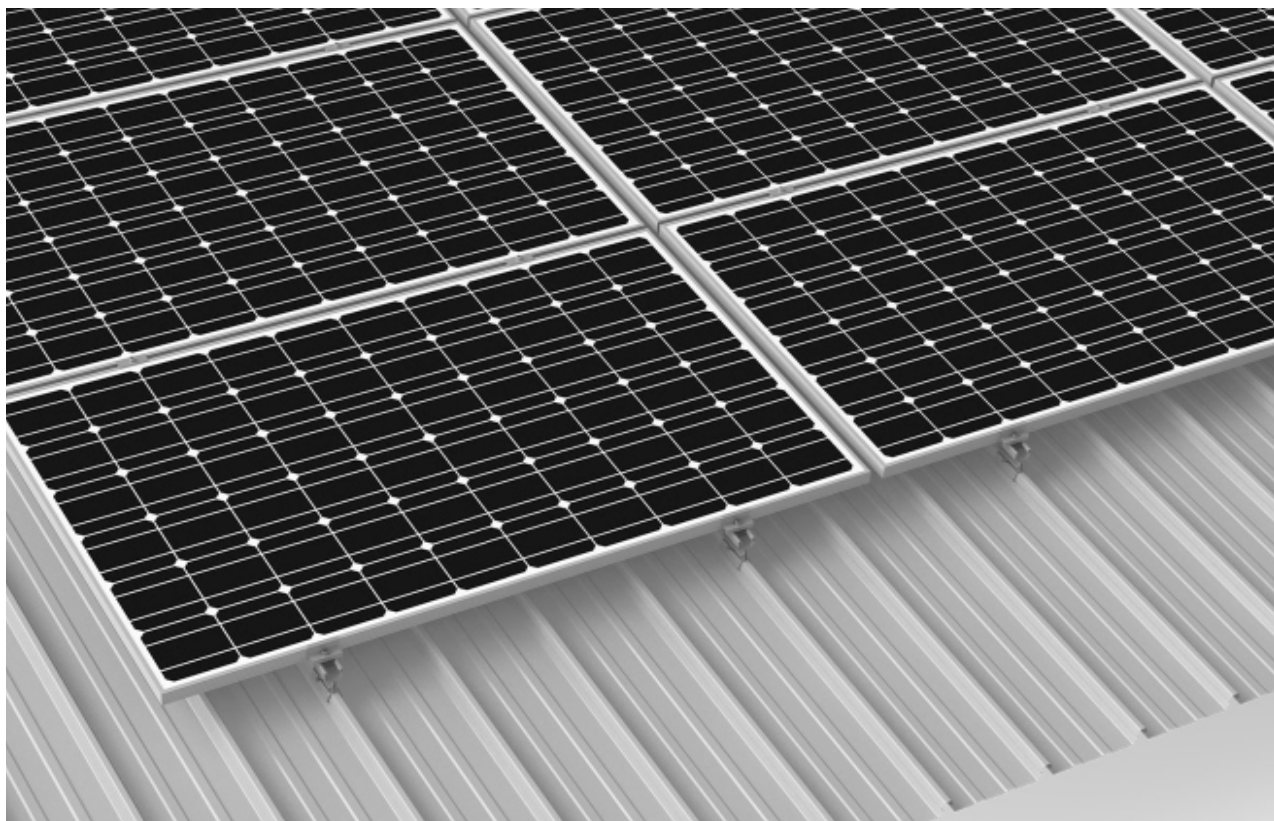
All-rounder with only 4 installation steps. Floating with controlled thermal linear expansion.

The SpeedRail mounting system for photovoltaic systems has been specially developed for trapezoidal sheet metal roofs. In Germany, the system has an abZ certification.

- The proven long rail system for trapezoidal sheet metal applications as well as floating with controlled thermal linear expansion.
- Our best-selling system - over 2 GW installed worldwide
- All-rounder with only 4 installation steps - also suitable for high load

PITCHED ROOFS

Universal KL-Clamp System



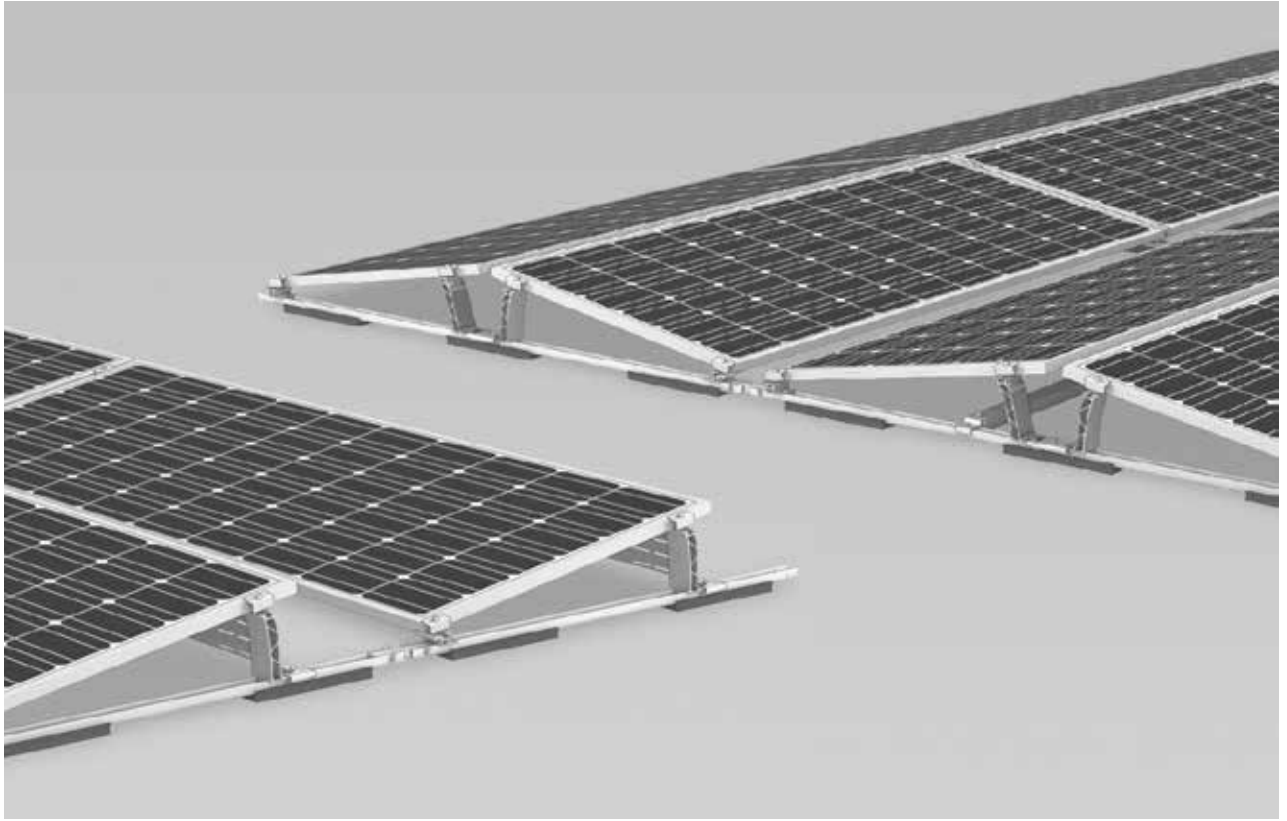
[Installation video](#)
[+ info](#)

Ultra-quick assembly solution for roofing types Klip-Lok® and Klip-Tite® with universal module clamp.

- Ultra-quick assembly solution for roofing types Klip-Lok® and Klip-Tite®
- Rail-less landscape assembly with one module-bearing clamp
- Comfortable portrait assembly with SingleRail
- Also possible for wider roof profile ribs

FLAT ROOFS

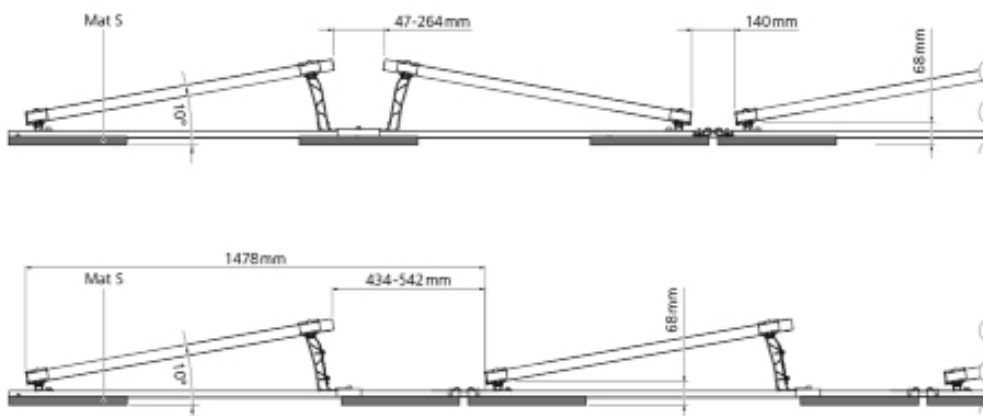
Dome 6 System



[Installation video](#)
[+ info](#)

Solutions for all roof coverings. Clearly ballast-optimised system based on the latest wind tunnel standards.

- Flat roof all-rounder - solutions for all roof coverings
- Clearly ballast-optimised system based on the latest wind tunnel standards
- Secure anchoring with fixed connection for roofs $< 10^\circ$ and low load reserves
- Component-optimised system



FLAT ROOFS

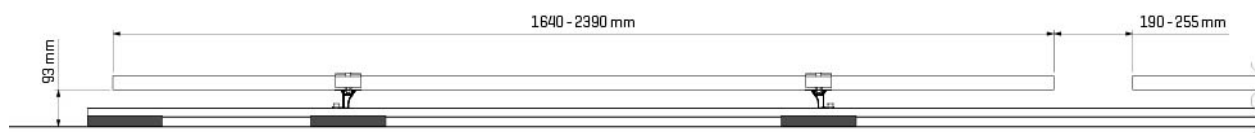
Dome Zero System



[Installation video](#)
[+ info](#)

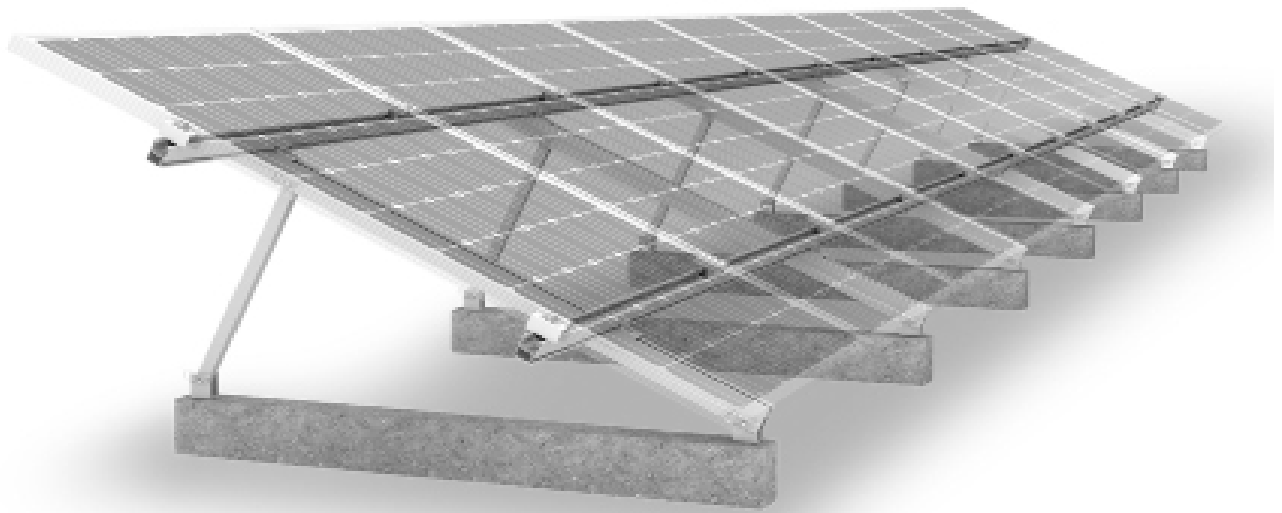
Roof-parallel mounting system suitable for roof pitches up to 10° with typical flat roof coverings.

- Roof parallel mounting system for flat roofs with Dome 6 components
- Suitable for roof pitches up to 10° with typical flat roof coverings
- Placement in portrait orientation of the modules
- Very flat construction height – can be hidden behind a parapet



FLAT ROOFS

TiltUp Vento System



[Installation video](#)
[+ info](#)

3 different elevation angles

- All module arrangements in 3 elevation angles available: 20°, 25° and 30°;
- Component connections identical throughout

Different module layouts

- Portrait/landscape possible;
- Clamping on the short or long side

Few components

- Refined system with well thought-out connections;
- Enables systemic storage and flexible application possibilities

Various roof connections

- Ballasted with concrete foundation: for almost every flat roof;
- Direct connection with concrete anchors possible

FLAT ROOFS

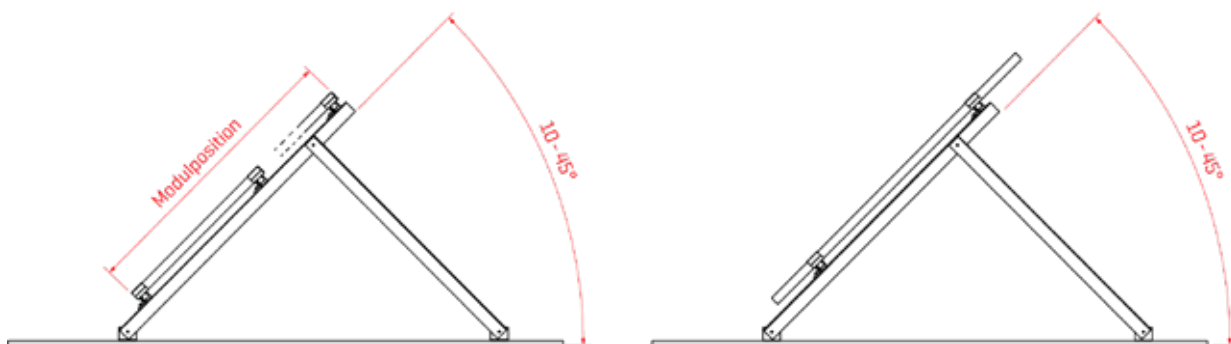
MultiAngle System



[Installation video](#)
[+ info](#)

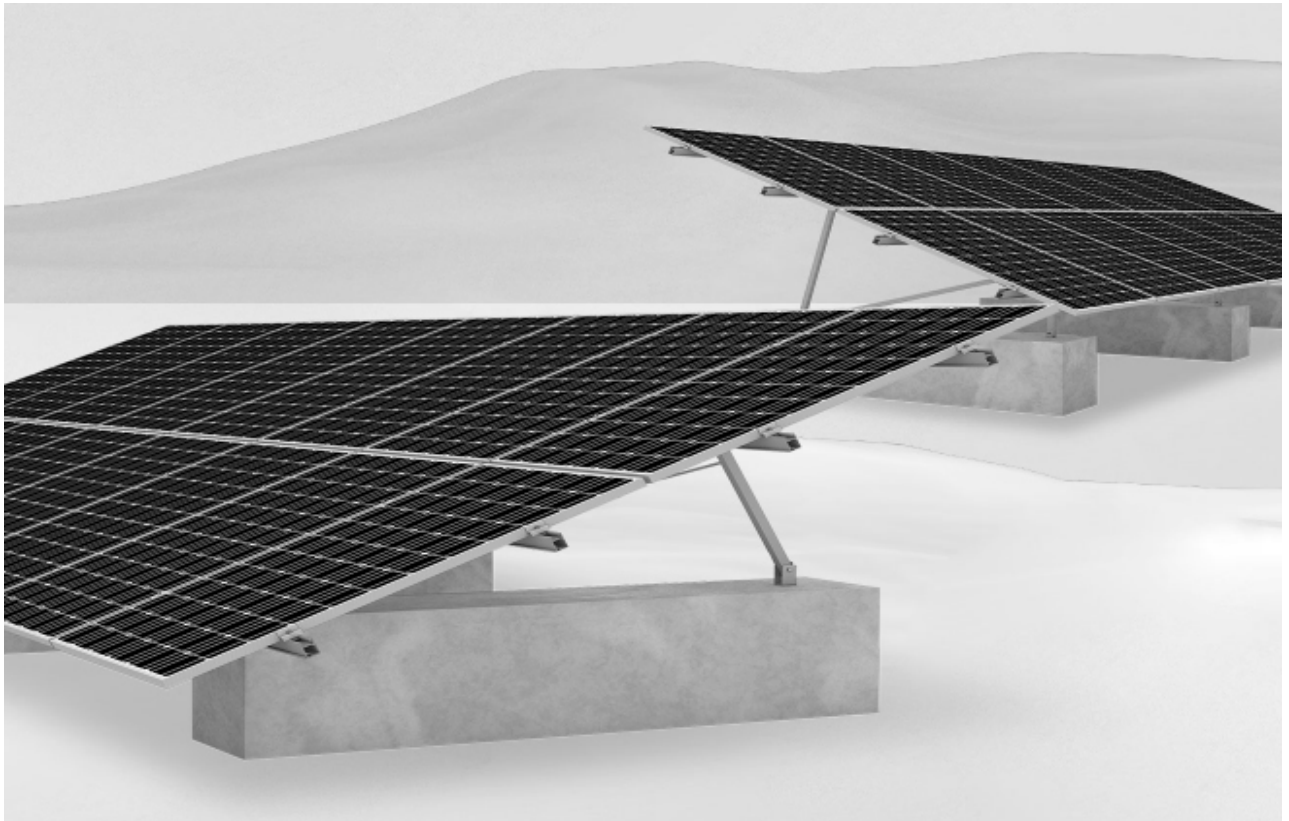
High flexibility due to individually adjustable elevation angles and universal module orientation.

- High flexibility and individual solutions
- Suitable for almost all flat roofs
- Individually adjustable elevation angles
- Universal module orientation



OTHER AREAS OF APPLICATION —

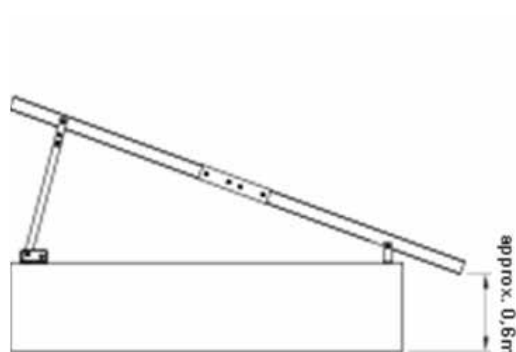
A-Rack / P-Rack System



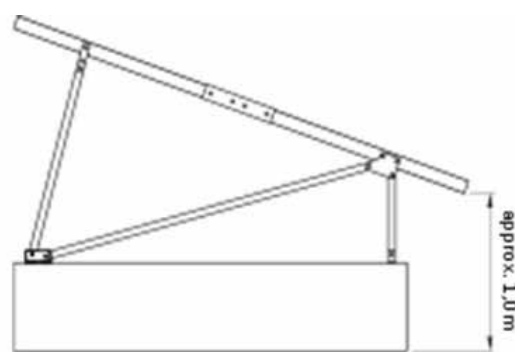
[Installation video](#)
[+ info](#)

Simple solution for small ground mounted projects and off-grid systems. Components pre-assembled with assemble 15°, 20° and 25°.

- Simple solution for small ground-mounted projects and off-grid systems
- Detailed foundation and reinforcement plans
- Pre-assembled components: Ready to assemble 15°, 20° and 25°.
- Delivery complete as pallet goods (maximum rail length 1.9 m/transport possible on pick-up vehicles)



A-Rack



P-Rack

Company

Van der Valk Solar Systems is since 2009 one of the fastest-growing companies in the solar industry and focuses entirely on the development and production of solar mounting systems for pitched roofs, flat roofs, and open fields. Van der Valk Solar Systems also has an office and warehouse in the UK, offices in Sweden and Spain and is currently active in 13 countries.



Flat roofs



Pitched roofs



Ground mount



Cable management

✓ Innovative

✓ Customer-oriented

✓ Reliable



Calculation Software

Valkpvplanner.com



Online calculation software

With the free to use ValkPVplanner, every flat or pitched roof project can be designed via satellite images, a building drawing prepared by you, or simply by specifying the number of panels desired. The result is a detailed manual including installation drawings and material lists, and for flat roofs a ballast overview.

The ValkPVplanner is user-friendly, it can be linked to your webshop and/or another PV programme via an API connection. Default values for the most common variables provide rapid insight into the possibilities for your project.

Option 1: Simple mode

Draw a system without a building

- Draw a system on a blank sheet
- Specify the number of panels per row and the number of rows



Option 2: Satellite map

Draw a system on an existing building

- Draw the system on an existing roof using satellite images, such as Google Maps
- Quickly and easily define the mounting material for multiple and different roof surfaces



Option 3: White map

Draw a system on a new building

- Draw a system on a blank sheet
- For new buildings, it is sufficient to state the building dimensions



[+ info](#)

- Innovative systems designed according to globally valid norms
- Fast and reliable deliveries thanks to modern machine park and large stocks
 - System supplier since 1963
- Free to use software for project design and calculation
- Rapid mounting thanks to pre-mounting of essential components
 - Extensive technology and marketing support
- Committed and entrepreneurial family-owned company

ValkKits

PV Kits for flat and pitched roofs



Flat roofs

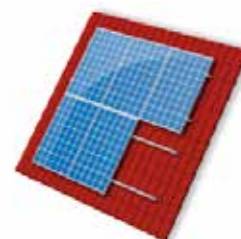


ValkBox3

- Mounting for one solar panel
- Very easy to mount
- For roofs with many obstacles



Pitched roofs



ValkBox - Boltline

- Mounting system with roof tiles
- All of the small mounting materials packaged as kit in one box
- Configurations of two to five panels

[+ info](#)

With the kits from Van der Valk Solar Systems, speed is of the essence including: the calculating speed with the ValkKITSplanner, the order picking speed, and the mounting speed. With the kits, you just need to keep a few products in stock and then quickly choose the materials you need for your order. This greatly reduces the chance of errors and makes preparing for a job child's play. Add ease of installation to all of this and you know you can quickly finish the job with the kits from Van der Valk Solar Systems.

Flat Roofs

ValkPro+



Orientation: south

Orientation: east-west

ValkPro+

- Suitable for all panel sizes
- Landscape mounting
- 10° tilt angle
- South and east-west mounting
- Option for extra panel support in case of a high snow load or with very large solar panels
- Option to fixation to the roof with ValkSolarFix



ValkPro+ Max

- For maximum solar panel load
- Portrait mounting
- 10° tilt angle
- South and east-west mounting
- Option to fixation to the roof with ValkSolarFix



Advantages:

- ValkPro+ in 10 degree landscape and portrait
- Mounting speed of 3 minutes per solar panel
- 100% equipotential bonding
- Certified for lightning protection
- Specific approval for Germany (abZ)
- Standard application up to 25m height (higher upon request)
- Minimal number of articles required
- Low ballast, supported by the Eurocodes and windtunnel tests
(specially tested for PVC roofs)
- Fitted with flexible, soft rubber feet for absorbing expansion and shrinkage and protecting roof
- Panel clamps standard with stainless steel plate for equipotential bonding
- Smart and safe cable management

[+ info](#)

The solar mounting systems of Van de Valk Solar Systems for flat roofs have been developed while taking roof and wind load into consideration and thus comply with the strictest safety requirements. Our assortment for flat roofs are well-known for their simplicity and speed of mounting. After completing the design with our calculation software, the necessary ballast (small quantity) can be ordered directly. This simplifies the logistics and installation.

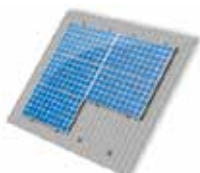
Commercial pitched roofs



ValkPitched - Trapezoidal



Steel roof/sandwich



Unique to this PV mounting system:

- Clamp system
- Universal mid-clamps and endclamps (H28 – 50mm)
- Logistical advantage due to short profile lengths
- If desired, long lengths also available
- Waterproof mounting system with special screws or rivets

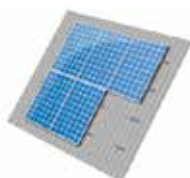
ValkPitched - Corrugated



Eternit corrugated roof



Steel corrugated roof



Unique to this PV mounting system:

- Universal hanger bolt clamp for M10 and M12 hanger bolts/ threaded ends
- Easily adjustable in height
- Hanger bolts available for wooden and steel purlins
- Suitable as a single layer or cross bond system

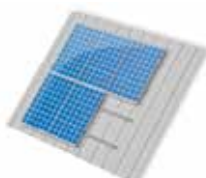
ValkPitched - Standing Seam



Standing seam flat



Standing seam round



Unique to this PV mounting system:

- Clamp system
- System for standing seam roofs | round
- Universal mid and end panel clamps (H 28-50 mm)

[+ info](#)

Residencial pitched roofs



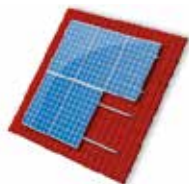
ValkPitched - Tiled



Standard roof tiles



Slate roof tiles



Unique to this PV mounting system:

- Clamp system
- Universal mid and end clamps (H 28-50 mm)
- Less roof fixing necessary due to very strong profile
- Connection piece as strong as profile, so no weak spots
- Practical and safe lateral mounting

ValkPitched - Mediterranean



Fixed roof tiles



Unique to this PV mounting system:

- Clamp system
- Universal mid-clamps and endclamps (H28 – 50mm)
- Easy to adjust vertically and horizontally
- Landscape and portrait mounting possible
- Universal L-adapter for M10 and M12 hanger bolts/cable ends

[+ info](#)

Ground mount



Solar ramps

ValkDouble / ValkTriple / ValkQuattro

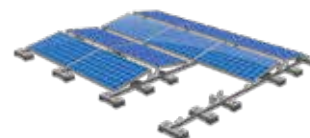
- Up to twice as many panels on a roof
- Universal mid-clamp and endclamps (H 28-50 mm)
- Minimal height due to small fixed tilt angle of 10°
- Can also be used as ground mount system



Ground

ValkPro+

- No ground penetration and heavy machines needed
- Special foundation blocks take care of height, ballast and stability
- All variants of ValkPro+ possible



[+ info](#)

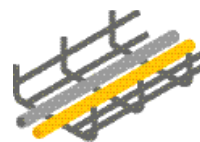
Solar ramps and ValkPro+

All versions of the Van der Valk Solar Systems ground mount systems are easy to place on flat open surfaces like an abandoned industrial terrain, field or garden. No anchoring points have to be drilled into the ground, making the systems ideal for a water purification plant, for example.

By focussing on a double use of surfaces for solar panels, our systems can be placed on roofs, parking places and waste dumps. This makes optimal use of the limited space that is available and avoids taking up scarce areas.

The large concrete blocks and/or special concrete foundation blocks provide the necessary ballast, offer stability and raise up the system, making maintenance easier. To prevent weed formation, a root-proof membrane is used.

Cable management ValkCableCare



Cable baskets

- Wide range of cable baskets, lids, dividers and accessories
- Special roof support for one, two or even three cable baskets next to each other
- Cable baskets can be positioned in the recesses of the rubber tile carriers of the ValkPro+ system



Cable clamps

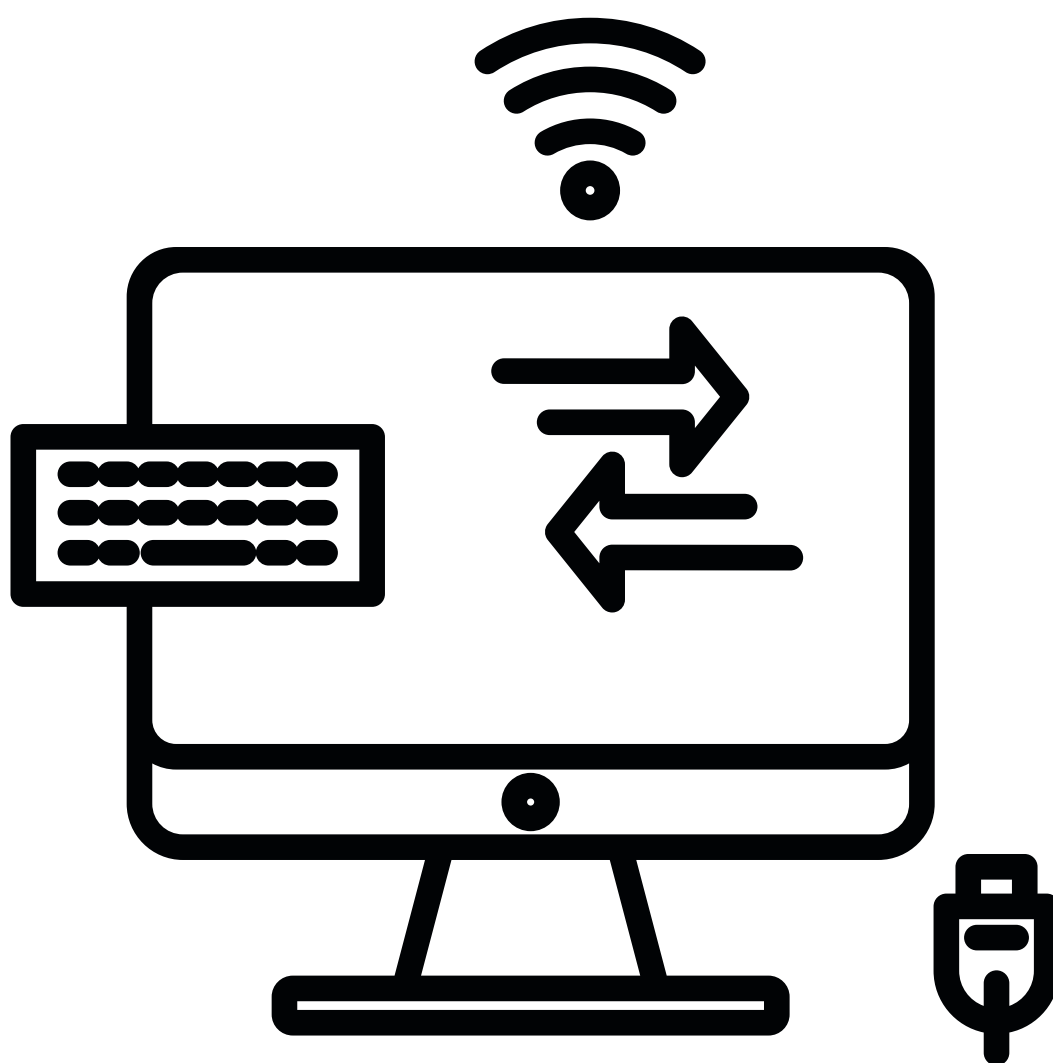
- Effective solutions for tying up DC & AC cables and connectors
- Cable clamps can be secured to profiles, roof carriers and solar panels
- Various accessories for evening out surfaces



Van der Valk Solar Systems offers a complete range of cable management products under the name ValkCableCare. With these products the cabling of the PV-system can be arranged in a neat, safe and quick manner.

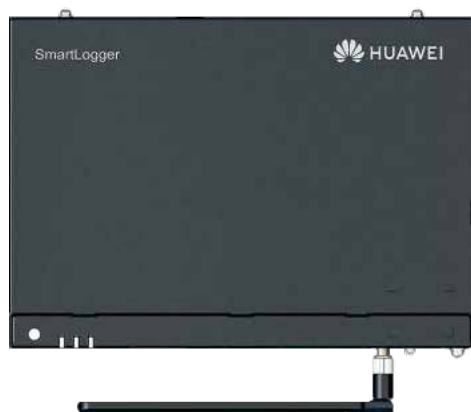
[+ info](#)





Monitoring Systems

SmartLogger 3000A



Smart

Smart zero export control design



Simple & Easy

Easy to install on site



Safe & Reliable

Safety by lightning protection module

[+ info](#)

Smart Power Sensor



Accurate

Class 1 measurement accuracy



Simple & Easy

LCD display, easy to set and check



Safe & Reliable

Overall power consumption ≤ 1 W

[+ info](#)

Smart Dongle



Smart

2G, 3G, 4G / WLAN communication
Support 3rd-party monitoring system



Simple

Plug & Play



Reliable

IP65 | Support auto reconnection

[+ info](#)



DTU-Lite-S



[+ info](#)

DTU-Pro






[+ info](#)

Smart Meter GM3000 / GM1000



GoodWe Smart Meter is designed with high precision small dimensions, convenient operation and installation. It is available for both single-phase and three-phase grid system connection to detect voltage, current, power and energy, for working with inverters including SEMS systems for the purpose energy management.

	Modular Design
	Precise Data Collection
	Easy Installation

[+ info](#)

EzLogger Pro



EzLogger Pro is a self-developed monitoring device by GoodWe. In combination with a GoodWe solar inverter, it can easily read and record all key plant data and constantly transmit the data to the GoodWe portal via internet.

[+ info](#)

SEC1000 / SEC1000S



The SEC (Smart Energy Controller) is composed of GoodWe's three-phase meter and control board. It can be connected with SEMS to control and manage the performance of inverters in each string. SEC1000 is for monitoring, export power control and reactive power compensation, while SEC1000S is for export power control and ET Series inverter parallel control (up to 10 units). Small box, mighty functions!

[+ info](#)

Si-RS485TC-2T-v-MB + Tamb-Si + Vwind-Si



[+ info](#)

- ☉ Si sensor with waterproof connectors for one temperature sensor and one wind speed sensor
- ☉ External sensors with preconfigured plugs
- ☉ Optional Shield Tamb-Si as a weather and radiation protection

Measured Parameters	Si Sensor Types	Accessories
- Solar Irradiance	Si-RS485TC-2T-v-MB	Tamb-Si
- Temperature of Sensor Cell		Vwind-Si
- Ambient Temperature		
- Wind Speed		

Company

Growatt was established in 2011 by a group of pioneers in the global PV industry with a vision to build a green and sustainable future. Specializing in sustainable energy generation, storage and consumption, as well as energy digitalization, the company designs, develops and manufactures PV inverters, energy storage products, EV chargers, smart energy management system and others.

Favored by global customers, Growatt ranks among the global top three PV inverter suppliers*. In particular, the company is ranked the number one residential inverter supplier globally* as well as the world's largest supplier of user-side energy storage inverters* in terms of shipment volume.

Since its foundation, Growatt has been committed to continuous product and technology innovations. With a well-established R&D platform and a R&D team of more than 650 professionals, the company constantly introduces new upgrades and innovations in the energy efficiency, functional safety and intelligent solutions of inverter, energy storage and EV charging applications. Till now, it has obtained more than 150 patents.

Mission

To enable everyone to benefit from sustainable energy.

Vision

To build the world's largest intelligent sustainable energy ecosystem for human kind.



ShineGPRS-X



- ⦿ Plug and play
- ⦿ Built-in memory for up to one month of data
- ⦿ Remote online monitoring and maintenance
- ⦿ Support more than 100 telecommunication

[+ info](#)

Model	Rated power	GSM/GPRS/EDGE frequency range	Operating current	Dimensions(L/H/W)
ShineGPRS-X	5W	850/900/1800/1900MHz	2A	122/32/47mm

ShineWiFi-X



- ⦿ Cable free, easy installation
- ⦿ USB communication port
- ⦿ Built-in memory for up to one month of data
- ⦿ Online monitoring and maintenance

[+ info](#)

Model	Rated power	Frequency range	Operating voltage	Dimensions(L/H/W)
ShineWiFi-X	1.2W	2.4GHz~2.5GHz (2412MHz~2484MHz)	5V(±5%)	135/79/29 mm

ShineLAN-X



- ⦿ Ethernet direct connection
- ⦿ Built-in memory for up to one month of data
- ⦿ Remote online monitoring and maintenance
- ⦿ Plug and Play

[+ info](#)

Model	Nominal voltage	Nominal current	Nominal power	Dimensions(L/H/W)
ShineLAN-X	5V(±5%)	2W(MAX:3W)	2W(MAX:3W)	152/47/28mm

ShineLink-X



- ⦿ Cable free, easy installation
- ⦿ Dynamic IP, plug and play
- ⦿ Communication distance up to 120m
- ⦿ Support up to 8 devices
- ⦿ Built-in memory for up to one month of data
- ⦿ Online monitoring and maintenance

[+ info](#)

Model	Power consumption	Voltage range	Frequency	Dimensions(L/H/W)
ShineLink-X	<2W standby, <5W peak	196V~250V	50/60Hz	105/85/26mm

ShineMaster



- ⦿ Local webserver for easy configuration
- ⦿ Supports RS485, Ethernet, 4G communication
- ⦿ Up to 64 inverters connection
- ⦿ Multi-function and high performance

[+ info](#)

Model	Power adapter	Power consumption	Max. communication range	Dimensions(L/H/W)
ShineMaster	Input: 100-240V, 50/60Hz AC Output 5V(+/-15%), 1A DC	2.5W	500m	130/84/25mm

Growatt Smart Meter

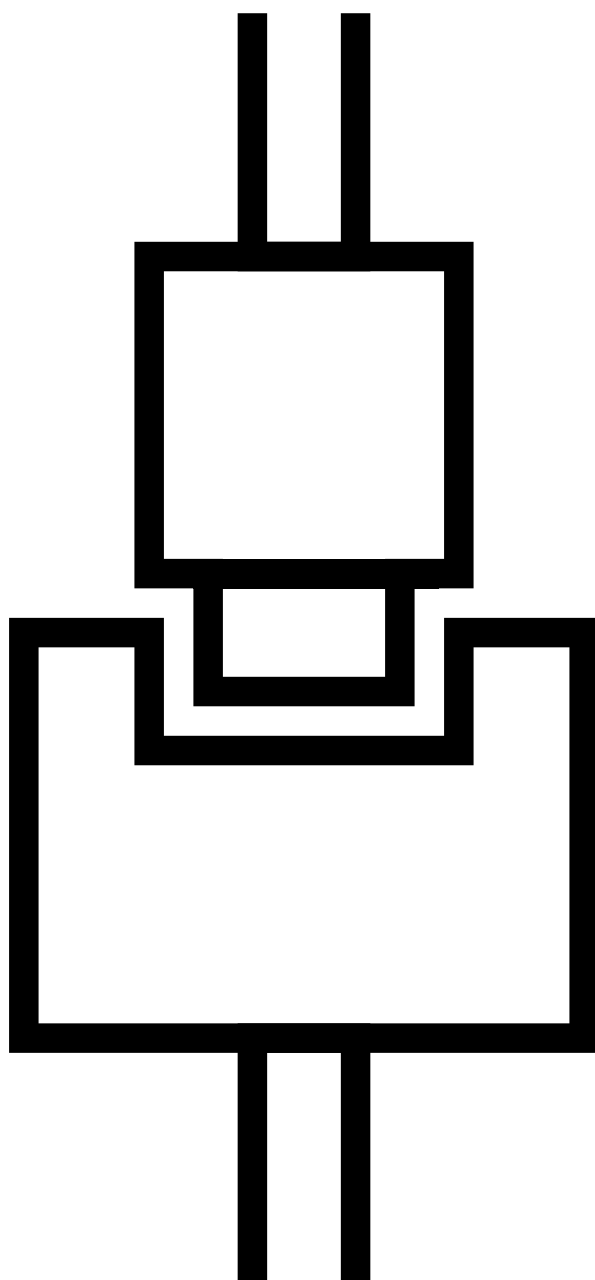


- ⦿ Class 1 measurement accuracy
- ⦿ LCD display, easy to operation and check
- ⦿ Compatible with Growatt storage and solar inverters

[+ info](#)

Model	Power grid type	Input voltage	Interface	Dimensions(L/H/W)
SPM-E	1P2W	21P2W	RS485	36/99/63mm
TPM-E	3P4W	3P4W		72/94.5/65 mm





Equipment & Accessories

TÜV SOLAR CABLE (H1Z2Z2-K)



1- 1st insulation: halogen free special copolymer

2- 2nd insulation: halogen free special copolymer

3- Copper conductor

1st and 2nd INSULATION COLOUR



Twisted flexible tinned copper conductor

CET SOLAR CABLE 1Xn,00 mm2 1.0/1.0 kV H1Z2Z2-K TÜV Rheinland Type Approved R60113052 IEC 60332-1 CE

[+ info](#)

Type	Section	Max Wire Diameter of Conductor	INSULATION THICKNESS 1 ST / 2 ND	OVERALL DIAMETER	RAME STAGNATO TINNED COPPER	REACTANCE (at 50 Hz)
	mm ²	mm	mm	mm	Ω/Km	Ω/Km
TÜV SOLAR CABLE	1x2.50	0.26	0.70 / 0.80	5.00	8.21	/
	1x4.00	0.31	0.70 / 0.80	5.40	5.09	0.143
	1x6.00	0.31	0.70 / 0.80	6.20	3.39	0.135
	1x10.0	0.41	0.70 / 0.80	7.40	1.95	0.119

*Diameters tollerances: according with TÜV standards



TOPSOLAR H1Z2Z2-K

[+ info](#)



Electrical performance LOW VOLTAGE 1,5 (1,8) kV DC · 1,0/1,0 kV AC.

Standard EN 50618 / IEC 62930 / UTE C 32-502

Approvals TÜV / RETIE / CE / RoHS / AENOR

CPR Construction Product Regulation

TOPSOLAR PV AL 1500V

[+ info](#)



Electrical performance: Low voltage 1,5/1,5 (1,8) kV CC based

on EN 50618 · 1,8/3 (3,6) kV according to IEC 60502-1.

Standard IEC 60502-1

CPR Construction Products Regulation Eca

BUKO WM4 C BT



[+ info](#)

WM4 C photovoltaic connectors

- One crimp contact for 4 mm² and 6 mm² cables
- TÜV approval according to the latest standard DIN EN 50521
- Can be loaded with a rated current of up to 35 A

SFKO WM4 C BT



[+ info](#)

WM4 C photovoltaic connectors

- One crimp contact for 4 mm² and 6 mm² cables
- TÜV approval according to the latest standard DIN EN 50521
- Can be loaded with a rated current of up to 35 A

BUGH WM4 C BT



[+ info](#)

WM4 C photovoltaic connectors

- One crimp contact for 4 mm² and 6 mm² cables
- TÜV approval according to the latest standard DIN EN 50521
- Can be loaded with a rated current of up to 35 A

SFGH WM4 C BT



[+ info](#)

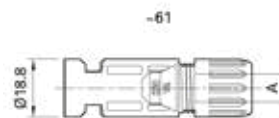
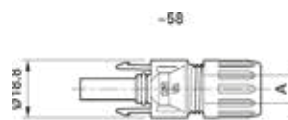
WM4 C photovoltaic connectors

- One crimp contact for 4 mm² and 6 mm² cables
- TÜV approval according to the latest standard DIN EN 50521
- Can be loaded with a rated current of up to 35 A

STÄUBLI

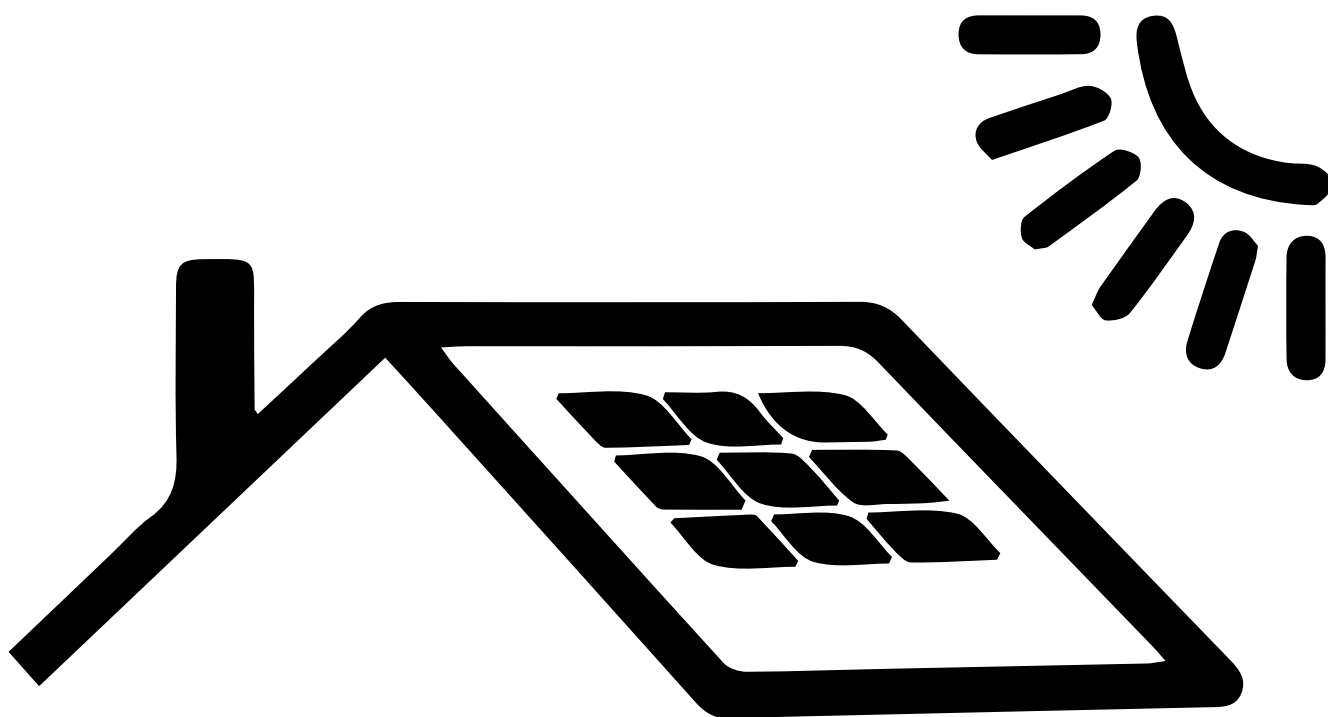
Female and male cable coupler MC4

[+ info](#)





Free and **Green**
energy from sun

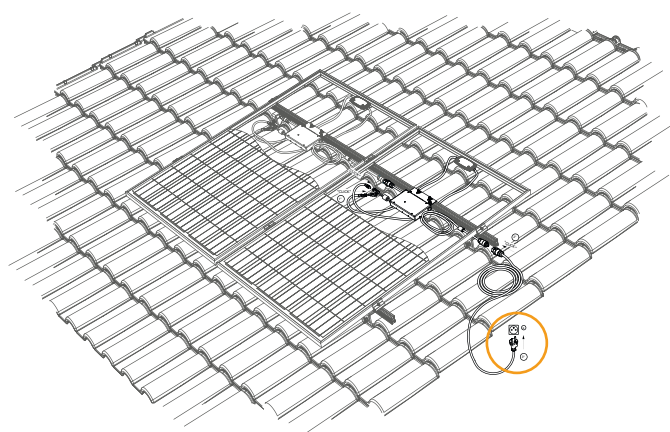


DYI Kits

solar ENERGYKIT

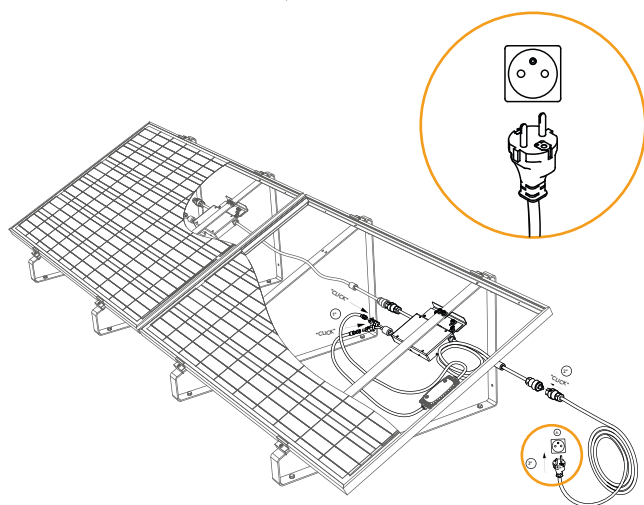
Power by VOLTALIA

Modular Solar Energy Kit - DIY



Advantages

- ☉ Produce your own energy from an endless source, the SUN
- ☉ Reduce your energy bill
- ☉ Protect the environment by producing energy without CO2 emissions or other particles
- ☉ Modular KIT expandable



(illustrative images)

What is included?

The SOLAR ENERGY KIT contains a photovoltaic system with all components needed to start immediately working:

- ☉ 1 photovoltaic module
- ☉ 1 micro inverter
- ☉ 1 fixing structure
- ☉ Cable and plugs for connection
- ☉ Screws and accessories
- ☉ 1 instruction manual for installation

Learn more at:

www.energy-kit.com



www.distribution.voltalia.com



MPrime Solar Solutions S.A.
Zona Industrial, Apartado 36 - 3684-001 Oliveira de Frades, Portugal
+351 220 191 000 (Chamada para rede fixa nacional) | distribution.pt@voltalia.com



Voltalia S.A.
1340 rue de Pinville
34000 Montpellier, France
+33 4 85 44 02 09 | distribution.fr@voltalia.com



Voltalia Renovables España S.A.
Calle Princesa 17, 4º - 28008 Madrid, España
+34 914 258 459 | distribution.es@voltalia.com



Voltalia UK Ltd.
Unit 5-7, Headley Park 8, East,
Headley Road, Woodley, RG5 4SA
+44 20 39 94 10 94 | distribution.uk@voltalia.com



Voltalia S.A.
ATE - 340, Kifissias Avenue, 15451 Neo Psychiko Athens, Greece
+30 21 06 72 95 23 | distribution.gr@voltalia.com



Voltalia Italia SRL
Viale Montenero 32, 20135, Milano, Italy
+39 02 89 095 269 | distribution.it@voltalia.com



Voltalia Romania
Crystal Tower, 48 Bd. Iancu de Hunedoara, 14th floor, Bucharest, Romania
+40316319004 | distribution.ro@voltalia.com

